



Operation and Safety Guide

PRO Carpet Blower
Velo Airmover - Model # 120090

Vendor Website: HD.drieaz.com

Support Phone No. 1-800-932-3030

⚠ WARNING

SAFETY TOPICS:

Read and understand manual before use.

Please visit HD.drieaz.com



SAFETY CHECKLIST:

FIRE AND ELECTRIC SHOCK HAZARD

1. Unit must be electrically grounded.
2. Insert 3-prong plug on power cord directly into matching grounded receptacle.
3. Do not use with an adapter.
4. Do not use with an extension cord.
5. Inspect power cord before use. Never operate with damaged power cord.



WARNING

1. Keep wiring and motor dry.
2. Do not operate in standing water.
3. If electrical components become wet, allow them to dry completely before using.

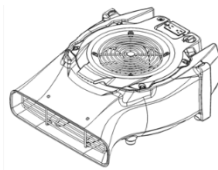


WARNING: This product may expose you to chemicals, including lead and phthalates, known to the State of California to cause cancer, birth defects, or other reproductive harm. For more information, go to P65Warnings.ca.gov

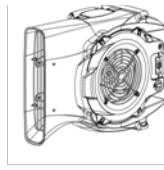


Tool Application: The PRO Carpet Blower produces high-velocity, focused airflow to accelerate the evaporation of moisture from materials. Position flat to dry floors, or set on either side of the unit next to a wall to dry without disrupting room traffic. Position on its end to blow air up to dry ceilings. Unit draws just 1.9 amps (115V).

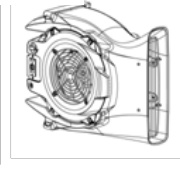
Operating Positions



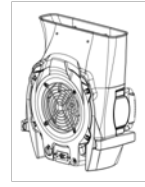
Horizontal (for floor and general drying)



Left edge (for wall drying)



Right edge (for wall drying)



Vertical (for walls and ceilings)

Tool Operation:

Step	Action
1	Unwrap the cord wrap completely.
2	Place the PRO Carpet Blower with the outlet directed at damp area. (See above the position options.)
3	Plug the unit into a standard 115V grounded outlet. Each PRO Carpet Blower needs 1.9 amps to operate.
4	To switch the unit on, press the on-off switch. (If using a 2-speed model, select the low or high speed.)
5	The Velo can be operated flat, on either side, or on its end to blow air up.
6	For maximum performance, make sure nothing is blocking or restricting the top inlet grill.
7	You can daisy chain or interconnect up to 6 PRO Carpet Blowers. Each unit can conduct a maximum of 12 amps when turned off, and 10 amps when it is turned on. That means you can plug other equipment into the unit but the amperage is limited.
8	The primary purpose of the circuit breaker (red) is to protect the machine. It turns the unit off when more than 12 amps run through the on-unit circuit.
9	The GFCI helps protect the user. If it detects a ground fault, the GFCI will interrupt the electric current. The GFCI will also trip when a short circuit or an overload occurs.
10	When the GFCI trips, unplug the unit, and look for potential hazards: standing water, frayed cords, etc. anything that would cause a surge of electrical current. Relocate the unit and plug it into a different outlet. Then push the "reset" button, and check to see if it's operating if so, continue use, if not follow store procedure for reporting rental unit problems.