

Owner's Manual WolfPack Drying System

Model F228, F228-230V

Legend Brands, Inc.

15180 Josh Wilson Road, Burlington, WA USA 98233

Phone US: 800 -932-3030 Fax: 360-757-7950 LegendBrandsRestoration.com

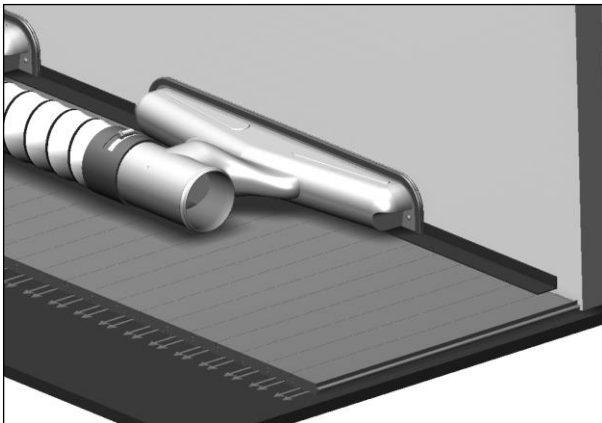
Congratulations on selecting a new WolfPack Drying System from Dri-Eaz Products. It is our goal to offer you the best available products and tools for restorative drying. We invite your written appraisal and suggestions for improvements. Reading this information will help you achieve maximum benefit **BEFORE YOU BEGIN**

Warranty registration

Please visit warranty.legendbrandsrestoration.com to register your purchase. Registration allows us to better assist you with using, maintaining or servicing your equipment and to contact you in case we have important safety information concerning your Dri-Eaz product. If you determine service is required, have your equipment model, serial number and original proof of purchase available and call your distributor for assistance with obtaining a return material authorization (RMA).

THE WOLFPACK DRYING SYSTEM

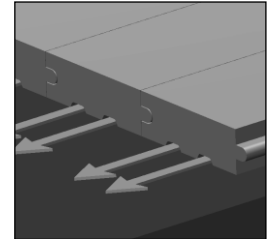
The WolfPack Drying System provides an efficient method for drying hardwood floors. This tool, used in conjunction with the Dri-Eaz AirWolf, utilizes CFM and static pressure as a means of injecting air underneath and into the flutes of the hardwood floor. Air movement within the flutes accelerates the drying process and helps in preserving the floor.



The WolfPack Drying System consists of the following parts: (3) 24-inch TurboVents, (1) boot/duct attachment connecting the AirWolf to the first Vent, (4) 30-inch ducting pieces with built-in hose clamps to connect additional Vents, (6) L-channels that preserve air pressure in spaces between and beside the Vents, (9) drywall screws for attaching

Vents to the structure, (1) 4-inch inlet duct attachment, (1) T-joint for maneuvering Vents, (1) duct connector to connect two ducting pieces together, (1) 10' gasket to seal the end of the TurboVent, and (1) carry-all duffel bag with wheels.

To plan the job, consider the direction of the boards, and the best location for the Vents. **Air must travel in the direction of the boards to achieve efficient drying.** Remove baseboards and moldings as needed to expose the expansion gap along the end of the boards, and allow the Vent openings to fit flush against the installation surface. The AirWolf must be unplugged and turned off while attaching the Vents.

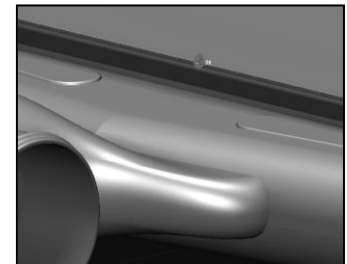


Place WolfPack Drying System Vents in-line and firmly into position. Place Vents up to 10 inches apart, with a piece of L-channel between the Vents. A combination of one to three Vents will cover a linear area between 24 and 118 inches. Be sure each Vent is in the correct position with the air opening facing down. Use as many of the Vents as needed to sufficiently dry the floor.

To maintain good air pressure and keep air leakage to a minimum, place the L-channels so that the bend fits snug into the gaps between the floor and wall. L-channels should be installed between and beside Vents so that the Vent overlaps the L-channel a minimum of 2 inches.

Fasten each WolfPack Drying System Vent to a wall using drywall or similar screws through the mounting holes on each end of the Vent. When fastening, angle the screws downward so they enter the sill plate. Installation of the Vents should securely fasten L-channels to the floor. The holes

made by the screws will be covered when you replace the baseboard or cove base. If too much air leaks from the middle of the top of the Vent, insert a screw tightly against the top (as shown), so the shaft of the screw presses down and the head presses in.



Attach the yellow ducting with clamps in-line from one Vent to another. Fasten clamps securely. Cap the Vent at the end of the line. Additional Vents may be installed; however, the pressure will decrease as more Vents are added. How many Vents can be operated effectively from one AirWolf will depend on the individual job.



Fasten the black end of the WolfPack Drying System boot to the AirWolf. Use the strap provided to securely fasten and minimize air leaks. Attach the clamp end to the first Vent in line. Check for any air leaks, and install gaskets where needed.

To decrease drying time, use the inlet duct attachment (as shown) to vent in air from a Dri-Eaz Dehumidifier. Dry air from a dehumidifier will absorb additional moisture drying the floor in less time. Hang the inlet duct attachment to the horizontal crossbar on the inlet of the AirWolf.



Caution: Do not use any other duct attachment device or block off any other part of the inlet on the AirWolf. Doing so may reduce cooling airflow across the motor of the AirWolf, and may cause an imbalanced airflow through the Dehumidifier. This may decrease performance and cause damage to the AirWolf and the Dehumidifier.

Use the T-Joint and duct connector to maneuver ducting around corners and other unique situations. The duct connector can also be used to lengthen ducting between the AirWolf and TurboVents, or between two TurboVents in-line. The unit is designed to be flexible to handle most any jobs.

Once set-up is complete, plug in and turn on AirWolf. Check to make sure that all connections are secure.



WARNING: This product may expose you to chemicals, including lead and phthalates, known to the State of California to cause cancer, birth defects, or other reproductive harm. For more information, go to P65Warnings.ca.gov

FOR PARTS AND SERVICE CALL YOUR LOCAL DISTRIBUTOR

Legend Brands, Inc.

15180 Josh Wilson Road, Burlington, WA USA 98233
Phone US: 800 -932-3030 Fax: 360-757-7950
LegendBrandsRestoration.com