

SHAKE WELL BEFORE AND DURING USE
TEST FABRIC OR SURFACE IN AN INCONSPICUOUS AREA FOR COLOR FASTNESS OR ADVERSE REACTION

**PRECAUTIONARY STATEMENTS:
HAZARDS TO HUMANS AND DOMESTIC ANIMALS**

WARNING: Causes substantial but temporary eye injury. Do not get in eyes or on clothing. Wash thoroughly with soap and water after handling and before eating, drinking, chewing gum, using tobacco or using the toilet. Remove and wash contaminated clothing before reuse.

Personal Protective Equipment (PPE)

Mixers, loaders, applicators, and other handlers must wear the following:

- protective eyewear (goggles, face shield, safety glasses)
- long-sleeve shirt
- long pants
- shoes and socks

In addition to the above PPE, applicators using a high pressure hand wand in an enclosed area must wear at least a NIOSH-approved respirator with:

A NIOSH approved particulate respirator with any R or P filter with NIOSH approval prefix TC-84A; or a NIOSH approved gas mask with a canister with NIOSH approval number prefix TC – 14G; or a NIOSH approved powered air purifying respirator with organic vapor (OV) cartridge and combination HE filter with NIOSH approval number prefix TC – 23C.

User Safety Requirements:

Follow manufacturer's instructions for cleaning/maintaining PPE. If no such instructions for washables exist, use detergent and hot water. Keep and wash PPE separately from other laundry. Discard clothing and other absorbent material that have been drenched or heavily contaminated with the product's concentrate. Do not reuse them.

User Safety Recommendations:

User should wash hands before, eating, drinking, chewing gum, using tobacco, or using the toilet.
User should remove clothing/PPE immediately if pesticide gets inside. Then wash thoroughly and put on clean clothing.
Users should remove PPE immediately after handling this product. Wash the outside of gloves before removing. As soon as possible, wash thoroughly and change into clean clothing.

FIRST AID

IF IN EYES: Hold eye open and rinse slowly and gently with water for 15-20 minutes. Remove contact lenses, if present, after the first 5 minutes, then continue rinsing. Call a poison control center or doctor for treatment advice.

IF ON SKIN OR CLOTHING: Take off contaminated clothing. Rinse skin immediately with plenty of water for 15-20 minutes. Call a poison control center or doctor for treatment advice.

IF SWALLOWED: Call a poison control center or doctor immediately for treatment advice. Have person sip a glass of water if able to swallow. Do not induce vomiting unless told to do so by a poison control center or doctor. Do not give anything by mouth to an unconscious person.

IF INHALED: Move person to fresh air. If person is not breathing, call 911 or an ambulance, then give artificial respiration, preferably mouth-to-mouth if possible. Call a poison control center or doctor for further treatment advice.

Have the product container or label with you when calling a poison control center or doctor, or going for treatment.

ENVIRONMENTAL HAZARDS

Do not discharge effluent containing this product into lakes, streams, ponds, estuaries, oceans, or other waters unless in accordance with the requirements of a National Pollutant Discharge Elimination System (NPDES) permit and the permitting authority has been notified in writing prior to discharge. Do not discharge effluent containing this product to sewer systems without previously notifying the local sewage treatment authority. For guidance, contact your State Water Board or Regional Office of the EPA.

PHYSICAL AND CHEMICAL HAZARDS

Flammable. Keep away from heat and open flame.

DIRECTIONS FOR USE

It is a violation of Federal Law to use this product in a manner inconsistent with its labeling. For Indoor Use Only. This is a ready-to-use product. Do not dilute this product.

USE RESTRICTIONS

• Do not enter or allow others to enter until sprays have dried or until vapors, mists, and/or aerosols have dispersed, and the treated area has been ventilated. • Do not apply this product in a way that will contact workers or other persons, either directly or through drift. • Only protected handlers may be in the area during application. Do not remain in treated area. • Remove pets, birds, and cover fish aquariums before spraying. • Do not use in aircraft. • Do not wet articles to point of runoff or drip. • Do not use treated articles until the spray has dried. • Do not use on food contact surfaces. • When used as a surface spray: Do not allow adults, children, or pets to enter until sprays have dried. • When used as a space spray: Do not allow adults, children, or pets to enter until vapors, mists, and aerosols have dispersed and the treated area has been thoroughly ventilated. • When used in dairy barns or facilities: Close milk bulk tank lids to prevent contamination from spray and from dead or falling insects. Remove or cover milking utensils before application. Wash teats of animals before milking. • Do not use in nurseries or rooms where infants, ill, or aged persons are present. • Restrictions for indoor agricultural premises and commercial animal housing and equipment (animals not present): Do not apply more than 1 time per day. • Restrictions for indoor food handling/processing facilities: (1) Do not apply more than 1 time per day; (2) Remove or cover dishes, utensils, food processing equipment, and food preparation surfaces, or wash them before use.

AS AN INSECTICIDAL AGENT

Surfaces and objects must be cleaned of gross filth with suitable detergent before treatment. Apply Mediclean X-590 with hand or power operated sprayers or foggers** as an insecticide and deodorizing agent, to previously cleaned surfaces. Spray areas until thoroughly moist, giving special attention to cracks and crevices. Allow ten to twenty minutes for drying. It is not necessary to wipe the sprayed surface. Mediclean X-590 will not stain those materials not stained by water.

To Kill Ants, Roaches, Bedbugs, Silverfish and other harmful insects: Direct and repeat spraying of the insects and in the cracks, crevices and hidden surfaces where they hide is necessary for control. Apply every 28 days or as often as needed.

To Kill Fleas and Ticks: Remove and destroy old animal bedding. Spray sleeping quarters of animals, floor areas, around baseboards, window and door frames, cracks, crevices and wherever the presence of these insects are suspected. Repeat as necessary. Thoroughly vacuum rugs and carpets prior to application. Do not spray animals. Put fresh



BACTERICIDE* • LIMITED DISINFECTANT • ANTI-MICROBIAL • INSECTICIDE AND DEODORANT

Mediclean X-590 is a Limited Disinfectant against Gram-negative Bacteria and is also effective in controlling insects and bacterial or organic odors.

Not for Use as a Hospital Disinfectant

ACTIVE INGREDIENTS	
o-Phenylphenol.....	0.22%
Diisobutylphenoxyethoxy ethyl dimethyl benzyl ammonium chloride monohydrate	0.70%
N-octyl bicycloheptene dicarboximide	0.33%
Piperonyl butoxide	0.20%
Pyrethrins	0.10%
INERT INGREDIENTS	98.45%
TOTAL.....	100.00%

E.P.A. Reg. 70385-3
E.P.A. EST NO. 37615-AZ-1

**KEEP OUT OF REACH OF CHILDREN
WARNING**

See other precautions on side panel
*Effective against gram negative bacteria.

Net Contents: 1 GAL. (3.785 Litres)

Mfg for: PRORESTORE® PRODUCTS
15180 Josh Wilson Road, Burlington, WA 98233
SHAKE WELL BEFORE AND DURING USE
U.S. Patent No. 3,458,629

117978 I

bedding in animal quarters after spray has dried. Treat animals with a registered flea and tick control product before allowing them to enter treated area.

To Kill Sowbugs, Centipedes, Firebrats and Mites: Contact as many insects as possible with the spray. Also thoroughly spray all parts of the room suspected of harboring these pests. Special attention should be paid to cracks, crevices, hidden surfaces under sinks, basement and utility rooms, floors, doorjams, behind and under stoves and refrigerators.

To Kill Flies, Mosquitoes, Gnats and Wasps: Close all doors and windows and spray upward into center of room with a slow sweeping motion. Spray 5-10 seconds for average room. Keep room closed for 15 minutes after spraying. Ventilate room thoroughly before re-entry. Sweep up and destroy fallen insects. Before spraying cover exposed food and utensils.

To Kill Carpet Beetles, Lice and Moths: Clean all articles prior to application. Thoroughly spray top and undersides of rugs and carpets. Thoroughly spray the interiors of lockers, trunks, closets, cupboards and other storage areas. Spray directly on restroom fixtures. When treating upholstered furniture and mattresses thoroughly spray exterior, paying particular attention to seams and folds. Treat interior to eliminate hidden infestations.

Mediclean X-590, when used as directed, is effective in decontaminating*** the treated exposed surfaces of bedding, mattresses, textiles, drapes, upholstered furniture, rugs, carpets and in storage areas to control insects and odors wherever they are a problem.

- Pest Control Service
- Odor Control Service
- Carpet Cleaning Service
- Water Damage Service
- Restoration Service
- Disinfection Service
- Waste-Removal Service
- Trash Chutes and Garbage Rooms
- Waste Compactors
- Storage areas and Basements
- Condensation collection and Drainage areas
- Refuse trucks
- Second hand furniture stores
- Shoes & boots
- Movie booths
- Bowling alleys
- Exercise rooms
- Veterinaries
- Laundry receiving stations
- Antique shops
- Upholstery shops

****FOR FOGGING APPLICATIONS**

When fogging, apply using cold or Ultra Low Volume (ULV) equipment. Apply adequate amounts of product so that the treated surfaces remain wet for 10 minutes. Application via ULV or micro mist foggers would require the device to be placed on the heaviest setting. The applicator must work backward out of the mist so as to minimize exposure to the product. The applicator should move the device or at least the nozzle continuously to avoid unwanted pooling of the product. Prevent anyone not wearing Personal Protective Equipment (PPE) from entering the treated area until the product has dried and the area has been ventilated. Do not allow adults, children, or pets to enter until vapors, mists, and aerosols have dispersed and the treated area has been thoroughly ventilated. Three air exchanges of ventilation or air scrubbing must be completed prior to re-occupancy. Sufficient mechanical ventilation should be used to achieve 4 air changes prior to allowing reentry. Minimum time for reentry would be an hour after application of the product.

AS A LIMITED DISINFECTANT

Hard, non-porous surfaces and objects must be cleaned of gross filth with suitable detergent before treatment. Spray surfaces and articles until thoroughly wet, use enough so that treated surfaces and objects remain wet for at least 10 minutes. May be applied with a

sponge to pre-cleaned, hard non-porous non-food contact surfaces, allowing to dry for 10 minutes. Heavily treated spaces must be adequately ventilated and not re-entered for at least one hour after treatment.

Kills gram negative bacteria. Use in lobbies, hallways, washrooms, mop rooms, and veterinary clinics; in schools, hotels, motels, restaurants, offices, homes and industrial buildings. For use on pre-cleaned hard non-porous nonfood contact surfaces such as glazed tiled porcelain, waste receptacles, compactors, on, in and around rest room fixtures, toilet seats, locker rooms, telephones, door knobs, furniture and empty containerized storage units. Follow method of application specified above.

AS A BACTERIOSTAT AND DEODORIZING AGENT

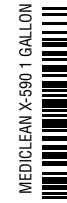
Apply Mediclean X-590 as directed to floors, walls, ceilings that have been damaged by smoke, fire, floods and sewage backups. For cleanup operations in areas such as attics, wall voids, basements, areas above suspended ceilings and similar inaccessible spaces in buildings. Spray avian, rodent and other animal and human wastes and carcasses as directed above, prior to removal and disposal. Treat spaces and surfaces as specified in method of application. For use as a bacteriostat and deodorizing agent on carpeting found in schools, hotels, motels, homes, shelters, commercial, industrial and public buildings. After flood or water damage, vacuum or extract as much water as possible before application. Apply full strength with sprayer until moist to carpet nap and rake or brush in. To treat the backing and padding a fogger*** is recommended. For best results, carpets should be cleaned before application.

STORAGE AND DISPOSAL

Do not contaminate water, food or feed by storage and disposal. **PESTICIDE STORAGE:** Keep from freezing. Store in ventilated areas. **PESTICIDE DISPOSAL:** Wastes resulting from the use of this product may be disposed of on site or at an approved waste disposal facility. **CONTAINER HANDLING:** Nonrefillable container. Do not reuse or refill this container. Triple rinse (or equivalent). Then offer for recycling if available or puncture and dispose of in a sanitary landfill, or incineration, or, if allowed by state and local authorities, by burning. If burned, stay out of smoke.

****This product is for use in the decontamination of the insects listed on this label.

109162 (22 155 1 000)



MEDICLEAN X-590 1 GALLON
4 7 136 00 187 3

8