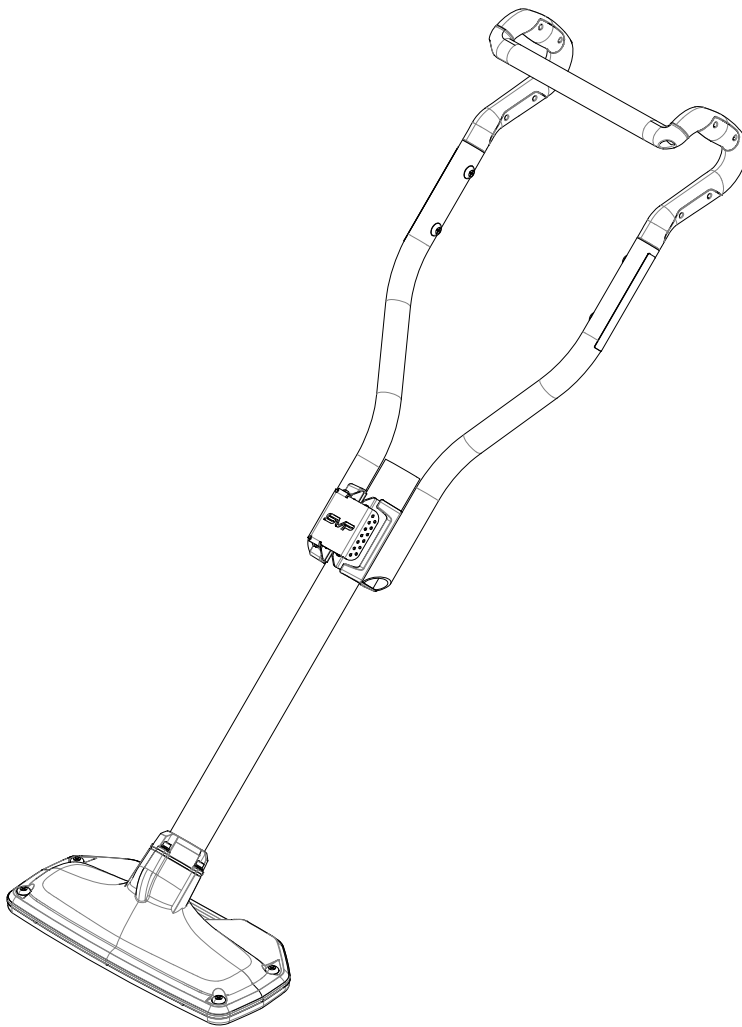


PROCHEM[®] **AQUA HELIX**[™]

HIGH VOLUME EXTRACTION TOOL

Operating instructions (ENG)

MODEL: 8.635-000.0



Read these instructions before using the tool.

Model: _____

Date of Purchase: _____

Dealer: _____

Address: _____

Phone Number: _____

Sales Representative: _____

Overview

The Aqua Helix is used to extract high volumes of water from deep within carpet and padding.

Warranty Registration

Thank you for purchasing a Prochem product. Warranty registration is quick and easy.
Your registration will allow us to serve you better over the lifetime of the product.

To register your product go to :
<https://www.legendbrandscleaning.com/Warranty>

For customer assistance:
800-932-3030

PROCHEM

Data Label2
 Overview2
Table of Contents3
How To Use This Manual4

Safety
 HAZARD INTENSITY LEVEL5

Operation
 Technical Specifications6
 Setting Up7
 Operation and Use8

Maintenance
 Components10
 Cleaning the Extraction Tool10

Parts
 Base 12
 Handle 14

How To Use This Manual

This manual contains the following sections:

- How to Use This Manual
- Safety
- Operations
- Maintenance
- Parts List

The HOW TO USE THIS MANUAL section will tell you how to find important information for ordering correct repair parts.

Parts may be ordered from authorized dealers. When placing an order for parts, the tool model is important. Refer to the DATA box which is filled out during the installation of your tool. The DATA box is located on the inside of the front cover of this manual.

Model:	_____
Date of Purchase:	_____
Dealer:	_____
Address:	_____
Phone Number:	_____
Sales Representative:	_____

The SAFETY section contains important information regarding hazardous or unsafe practices of the tool. Levels of hazards are identified that could result in product damage, personal injury, or severe injury resulting in death.

The OPERATIONS section is to familiarize the operator with the operation and function of the tool.

The MAINTENANCE section contains preventive maintenance to keep the tool and its components in good working condition.

- Cleaning

The PARTS LIST section contains assembled parts illustrations and corresponding parts list. The parts lists include a number of columns of information:

- **REF** – column refers to the reference number on the parts illustration.
- **PART NO.** – column lists the part number for the part.
- **QTY** – column lists the quantity of the part used in that area of the tool.
- **DESCRIPTION** – column is a brief description of the part.
- **NOTES** – column for information not noted by the other columns.

The manual part number is located on the lower left corner of the front cover.

The following symbols are used throughout this guide as indicated in their descriptions:

HAZARD INTENSITY LEVEL

There are three levels of hazard intensity identified by signal words -**WARNING** and **CAUTION** and **FOR SAFETY**. The level of hazard intensity is determined by the following definitions:



WARNING - Hazards or unsafe practices which COULD result in severe personal injury or death.



CAUTION - Hazards or unsafe practices which could result in minor personal injury or product or property damage.

FOR SAFETY: To Identify actions which must be followed for safe operation of equipment.

Report tool damage or faulty operation immediately. Do not use the tool if it is not in proper operating condition. Following is information that signals some potentially dangerous conditions to the operator or the equipment. Read this information carefully. Know when these conditions can exist. Locate all safety devices on the tool. Please take the necessary steps to train the operating personnel.

FOR SAFETY:

DO NOT OPERATE:

Unless Trained and Authorized.

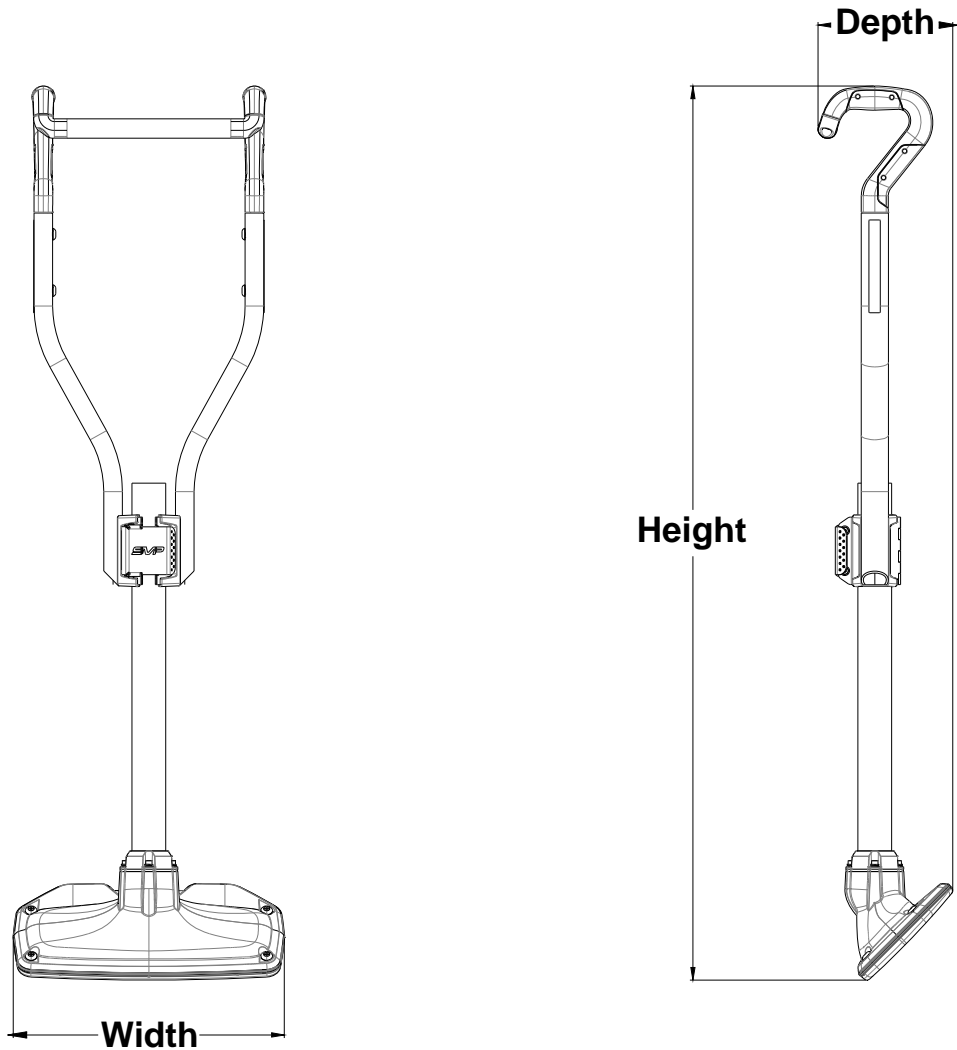
Unless Operation Guide is Read and understood.

In Flammable or Explosive areas.

In areas with possible falling objects.

Technical Specifications

ITEM	SPECIFICATION
Weight	10 lbs. (4.6 kg)
Depth	7" (17.8 cm)
Width	16" (40.6 cm)
Height	MIN.(STORAGE) 37" (94.0 cm) MAX. 54" (137.0 cm)
Construction	Aluminum, Polypropylene, Stainless Steel



Setting Up

From collapsed storage state;



1. Extend handle by opening the latch.



2. Slide out handle assembly to desired height.

NOTE: Adjust height of extraction tool so that the vacuum head is flat on the carpet while the handle is comfortably held for operator's height.

NOTE: The whole handle assembly can rotate around the vacuum tube for additional grip positions.

NOTE: The handle is designed to accommodate various grip positions. Varying the grip on the extractor tool will extend comfort over longer periods of usage.



3. Close latch.

⚠ CAUTION:

Avoid pinching fingers during closing.

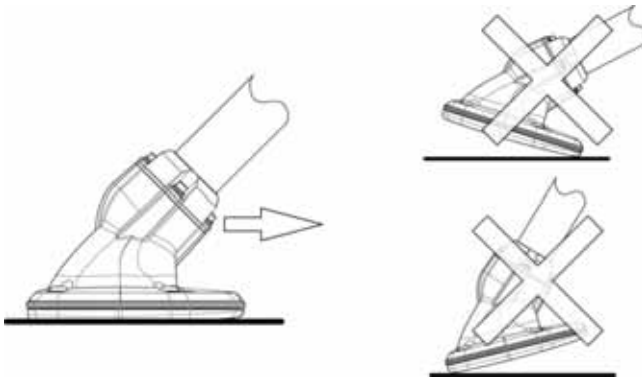
4. Connect suction hose to the center vacuum tube.

Operation and Use

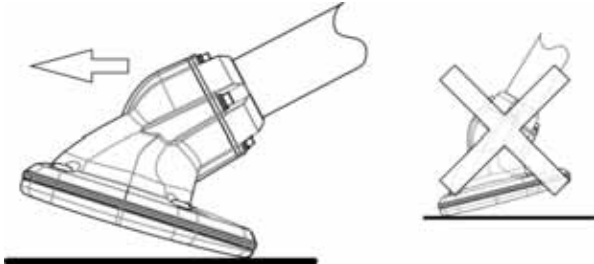
1. Place the extraction tool head flat in the lowest point in the room to remove as much standing water as possible, and to minimize water migration during the process.

NOTE: For best results, extract the perimeter and work towards center, extracting the entire area. At the beginning of each pass, place the vacuum head base on the carpet for 2 to 3 seconds before moving. This will give the vacuum a chance to create a good suction seal and pull down onto carpet.

2. Keeping the base of the head flat against the carpet surface, slowly pull the tool head backwards across the carpet. Water extraction will be visible, and the speed of tool movement will depend on the carpet type and amount of moisture. Sub-extraction has been properly performed when the operator no longer observes moisture flow through the clear head.

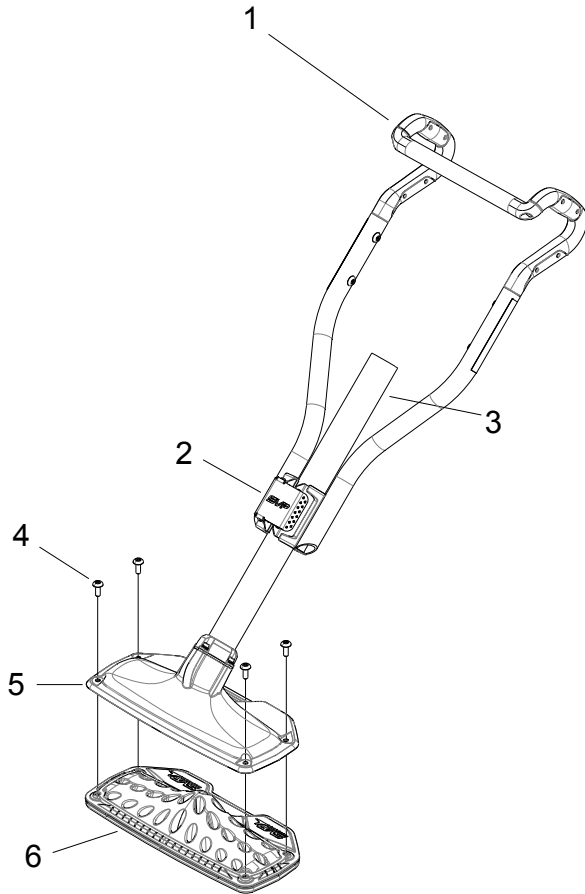


3. At the end of an extraction pass, lower the handle to tilt the extraction tool back onto the head's skid pads. This releases the suction seal with the carpeting allowing the tool to be pushed forward easily. Repeat process as needed.



4. Set the pace based on the amount of water in the flooring. Observe the flow through the clear head to decide when sufficient extraction is achieved.
5. Test carpet and pad for adequate water removal as per IICRC500 *Standard and Reference Guide for Professional Water Damage Restoration*.

Components



1. Handle
2. Latch, Height Adjustment
3. Vacuum Tube
4. Head Mounting Screws
5. Vacuum Head Top
6. Vacuum Head Base

Cleaning the Extraction Tool

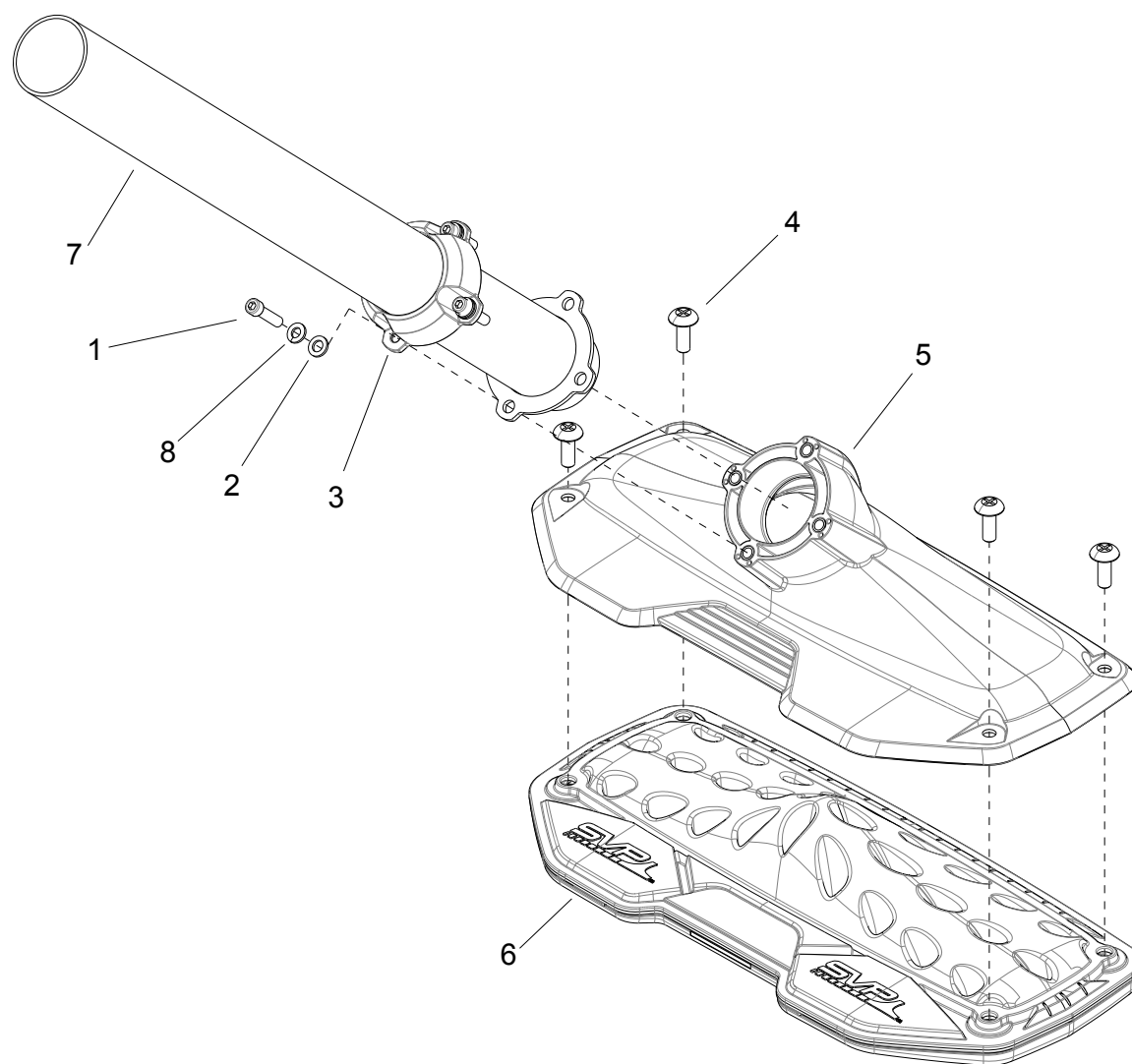
Perform after each job.

1. Disassemble the vacuum head.

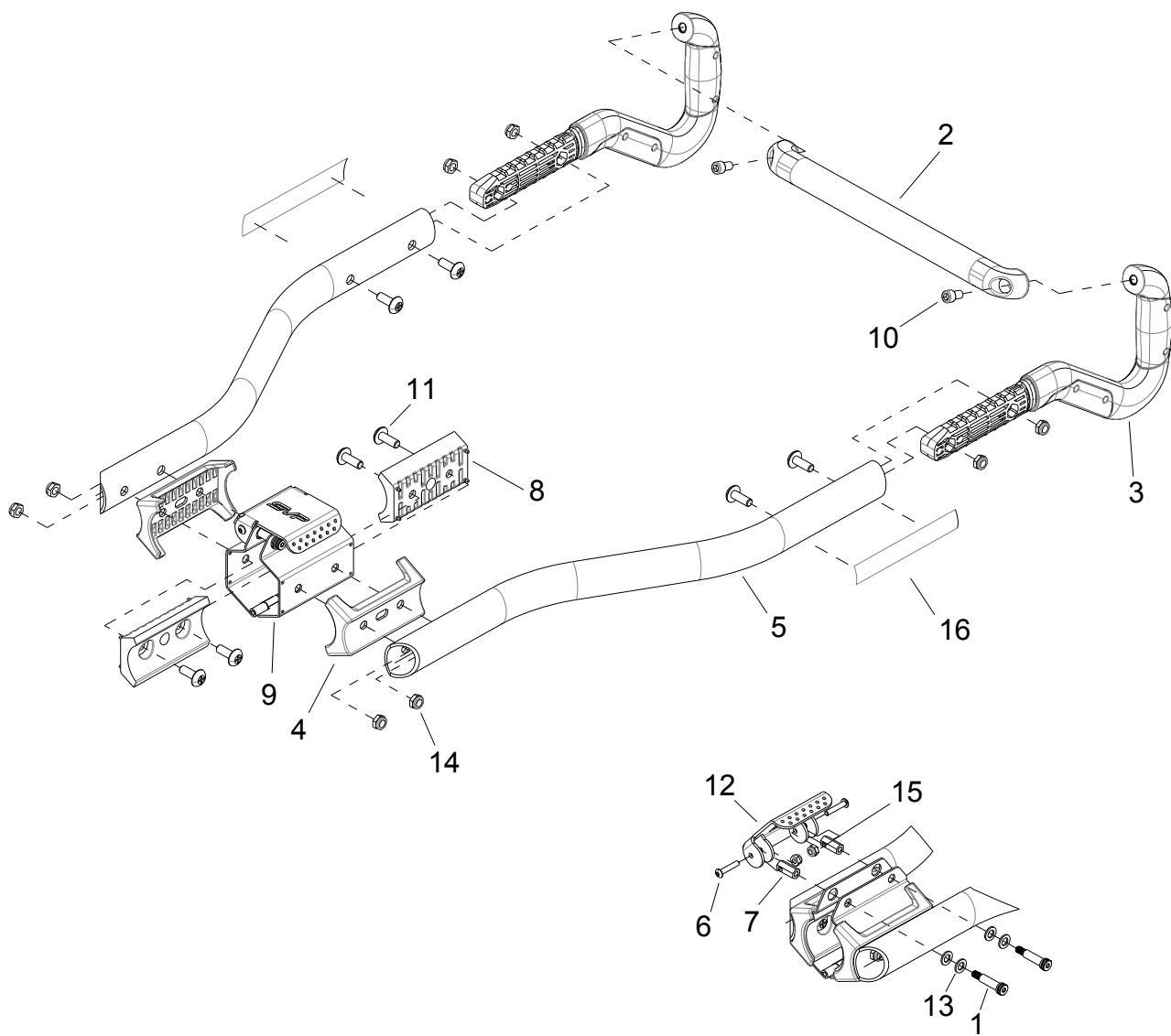
NOTE: Remove vacuum head base by removing the four phillips screws from the corners of the clear vacuum head top, that connects it to the vacuum head base.

2. Clean thoroughly as per IICRC500.
3. After cleaning towel dry parts or allow to air dry completely.
4. Re-assemble the extraction tool. Avoid over tightening the screws.

PARTS



REF	PART NO.	QTY	DESCRIPTION	SERIAL NO. FROM	NOTES
1	86273250	4	SCR, 1/4-20 X 3/4" SOCHD		
2	86362870	4	WASHER, 1/4 X 1/2 FLAT SS		
3	86362760	1	BEZEL, VAC TUBE, GRAY		
4	86276890	4	SCR, 5/16-18 X 3/4 PTHMS SS		
5	86362480	1	VAC HEAD, TOP		
6	86362470	1	VAC HEAD, BLUE		
7	86361900	1	TUBE, VACUUM, GRAY		
8	86173340	4	WASHER, SPLIT LOCK, 1/4, SS		



REF	PART NO.	QTY	DESCRIPTION	SERIAL NO. FROM	NOTES
1	86364860	2	SCR, 5/16 X 1 SSHLD, SS		
2	86364750	1	HANDLE, CROSSBAR		
3	86364740	2	HANDLE, SIDE		
4	86364410	2	COVER, HINGE		
5	86364260	2	TUBING, HANDLE, GRAY		
6	86364210	2	SCR, 10-32 X 1 BSHCS SS		
7	86364200	2	NUT COUPLER SS .201 HOLE		
8	86364050	2	INSERT, HINGE		
9	86363530	1	HINGE, HANDLE		
10	86362890	2	SCR, 5/16-18 X 1/2 SHCS SS		
11	86362560	8	SCR, 5/16-18 X 7/8 PTHMS SS		
12	86362530	1	LATCH, HANDLE		
13	86292500	4	WASHER, .324ID X .567OD X .057, SS		
14	86271840	8	NUT, 5/16-18 HEX NYLOCK THN SS		
15	86270990	2	NUT, 10-32 HEX NYLOCK SS		
16	86365360	2	LABEL, PROCHEM DRR		