

VersaCarpet™ VC700 Carpet and Upholstery Cleaner

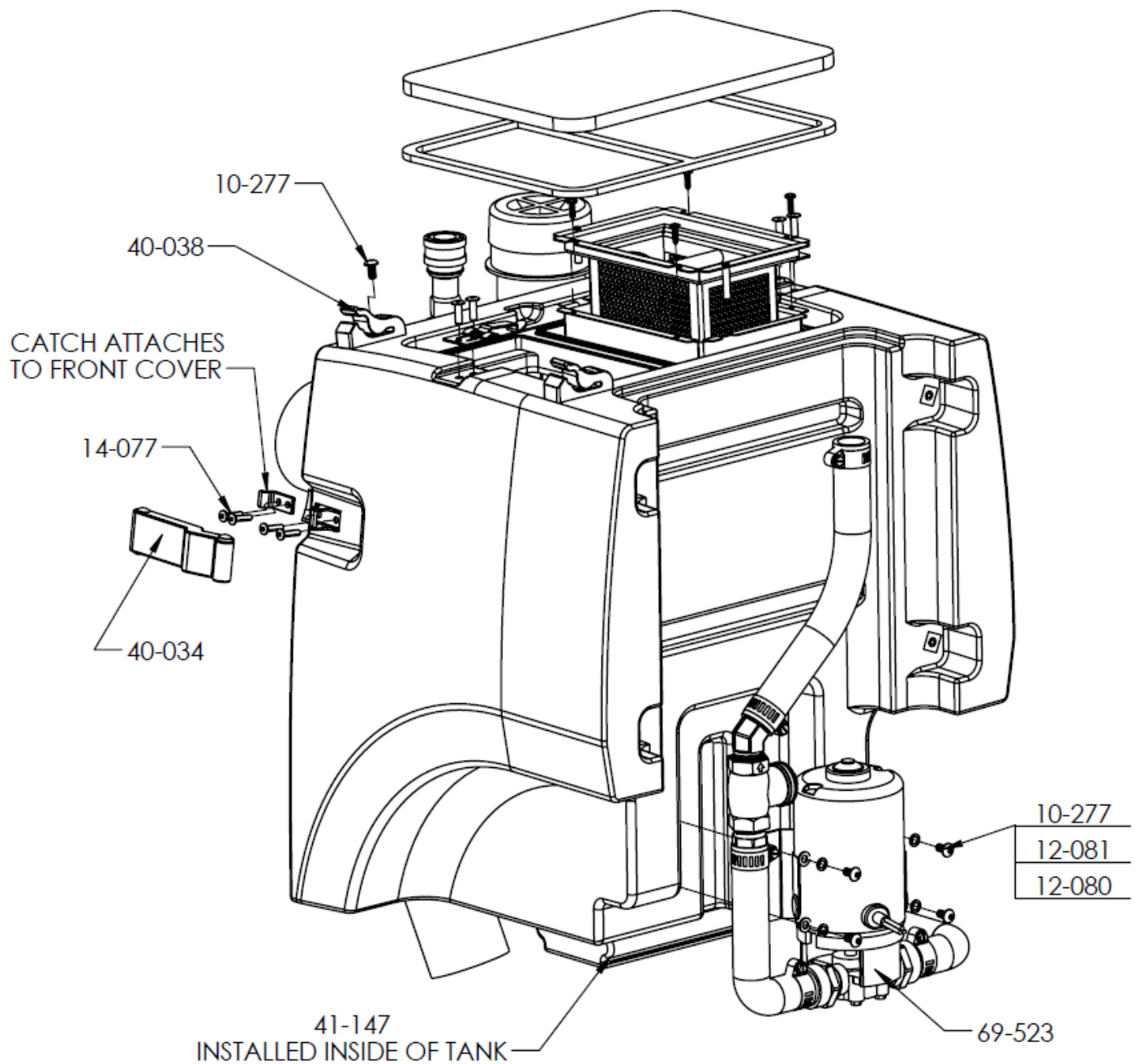
PARTS LIST

May 2014

LEGEND BRANDS, INC.

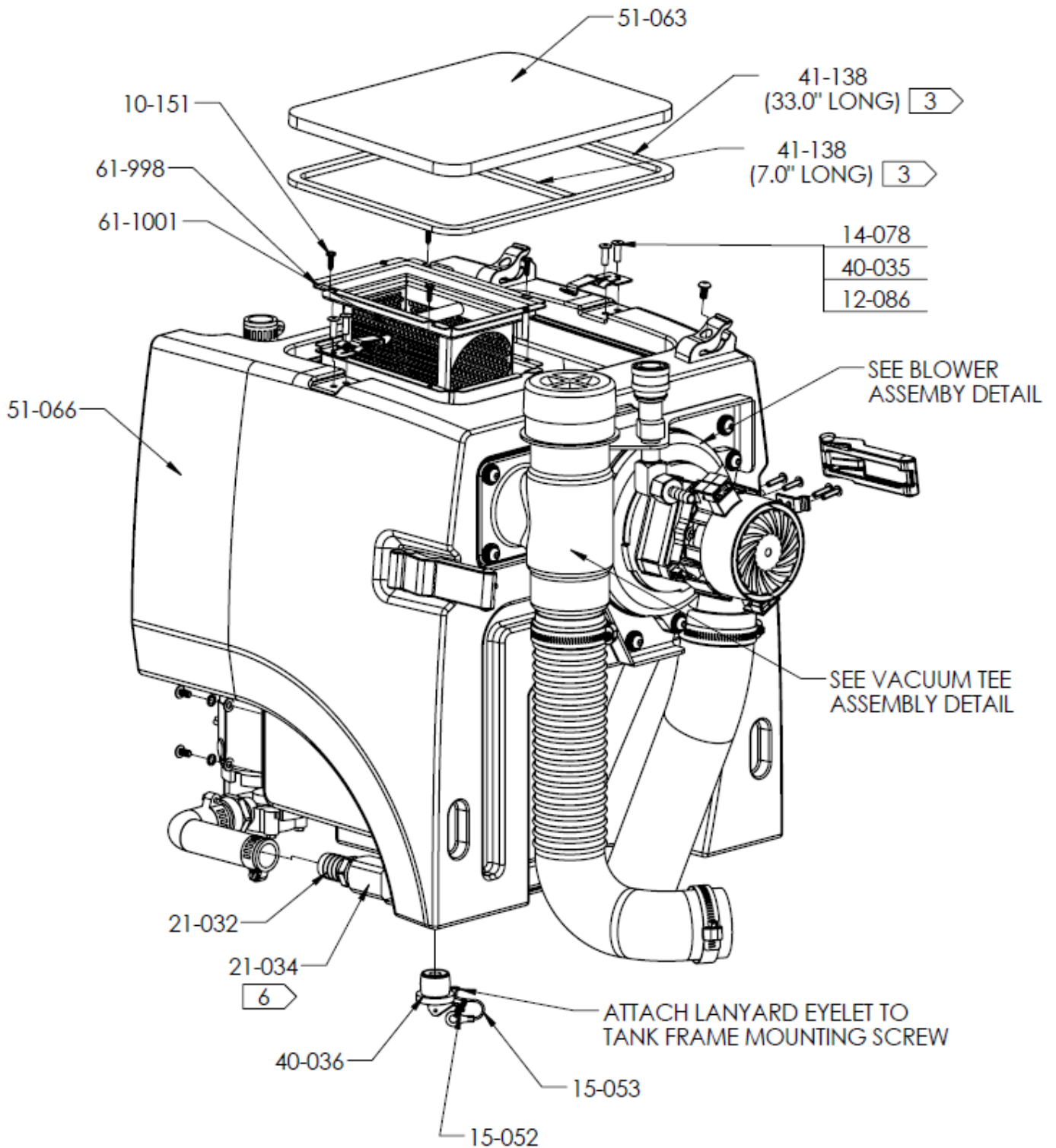
15180 Josh Wilson Road ■ Burlington, WA 98233
800-932-3030 ■ <http://VersaCleanSystems.com>

Patents: <http://www.LBpatents.com>



TANK ASSY DETAIL (1) VC700

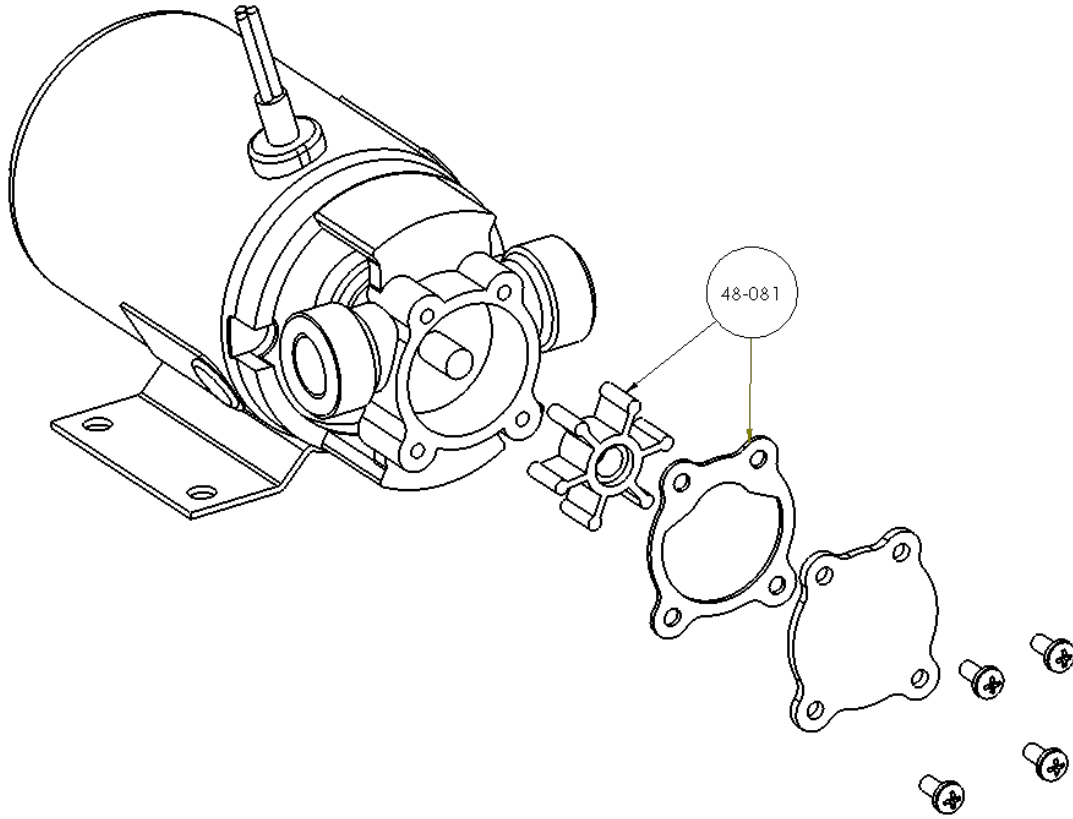
PART NO.	QTY	DESCRIPTION
10-277	6	SCREW, MACH M5-0.8 X 10 MM BHSCS ZP
12-080	4	WASHER, FLAT M5 ZP
12-081	4	WASHER, LOCK M5 ZP
14-077	8	RIVET – 5/32 X 1/2 TRI FOLD AL/AL
40-034	2	LATCH, PANEL HOLD DOWN
40-038	2	CLIP, ACCESSORY HOLDER .375 DIA NYLON BLK
41-147	1	FILTER, TANK 10 PPI POLYETHER FOAM



TANK ASSY DETAIL (BACK VIEW) VC700

PART NO.	QTY	DESCRIPTION
10-151	4	SCREW, #6 X 1-2 AB PHP SS (BEHIND KNOB)
12-086	4	WASHER, 3/16 RIVET .19 ID X .47 OD X .05 ZP
14-078	4	RIVET, 3/16 X .062-.125 GRIP SS

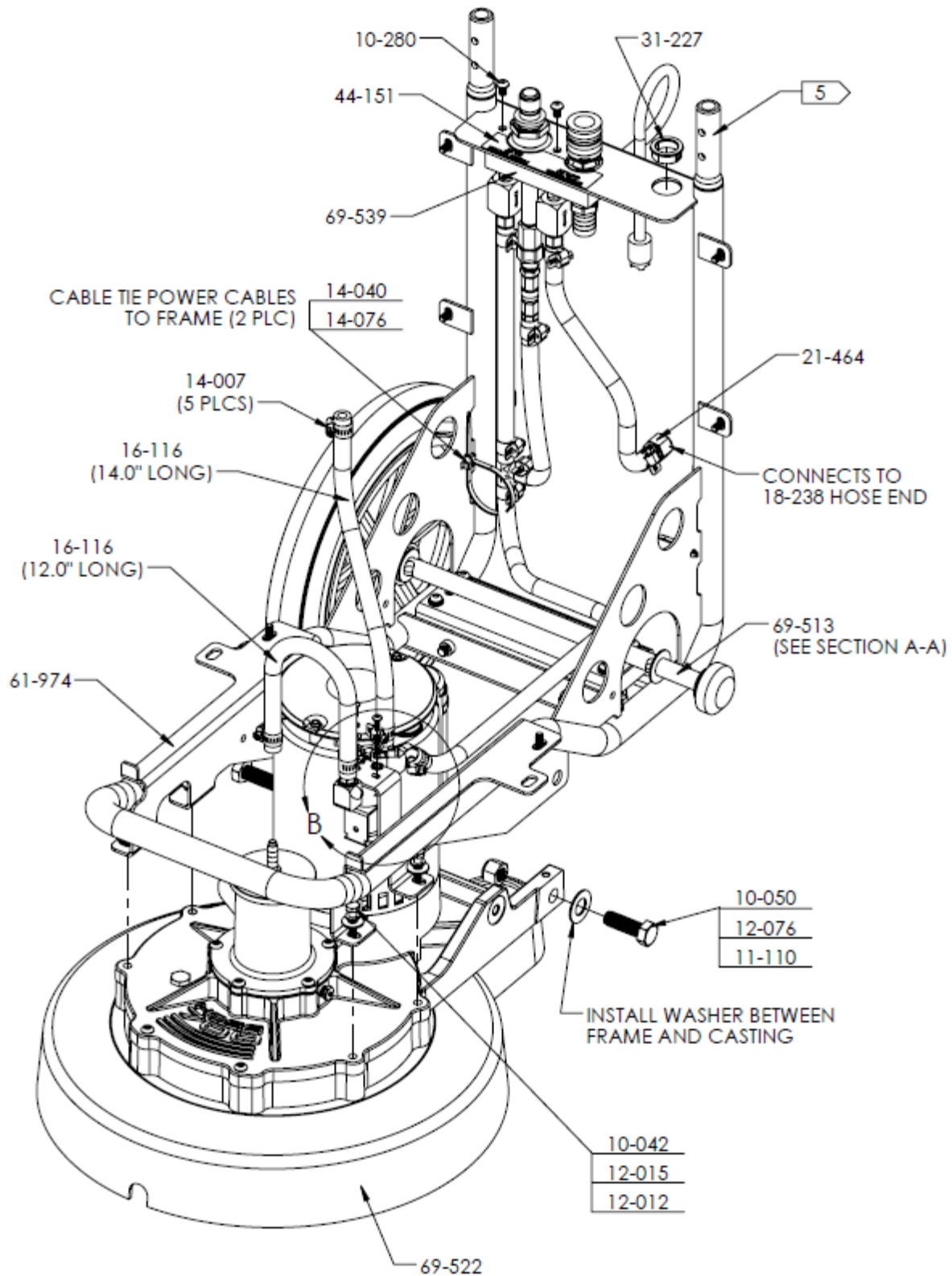
15-052	1	RING, SPLIT .526 ID X .064 ZP
15-053	1	LANYAND, 6.00 LONG VINYL COATED CABLE WITH EYES
21-032	1	FTTG, BRB 1/2 P X 3/4 H BRASS
21-034	1	ELL, STREET 1/2 BRASS
40-035	2	LATCH, DRAW SS CONCEALED MOUNT
40-036	1	PLUG, DRAIN 7/8 IN
41-138	1	GASKET, VACUUM TANK COVER 33" LONG
41-138	1	GASKET, VACUUM TANK COVER 7" LONG
51-063	1	COVER, VACUUM TANK CLEAR ACRYLIC VC700
51-066	1	ROTOMOLD, VACUUM TANK VC700
61-998	1	WELDMENT, STRAINER BASKET
61-1001	1	WELDMENT, VACUUM INLET BAFFLE



46-042, PUMP ASSY, PONY SERIES MODEL 370 VC700

(REPLACEMENT IMPELLER KIT)

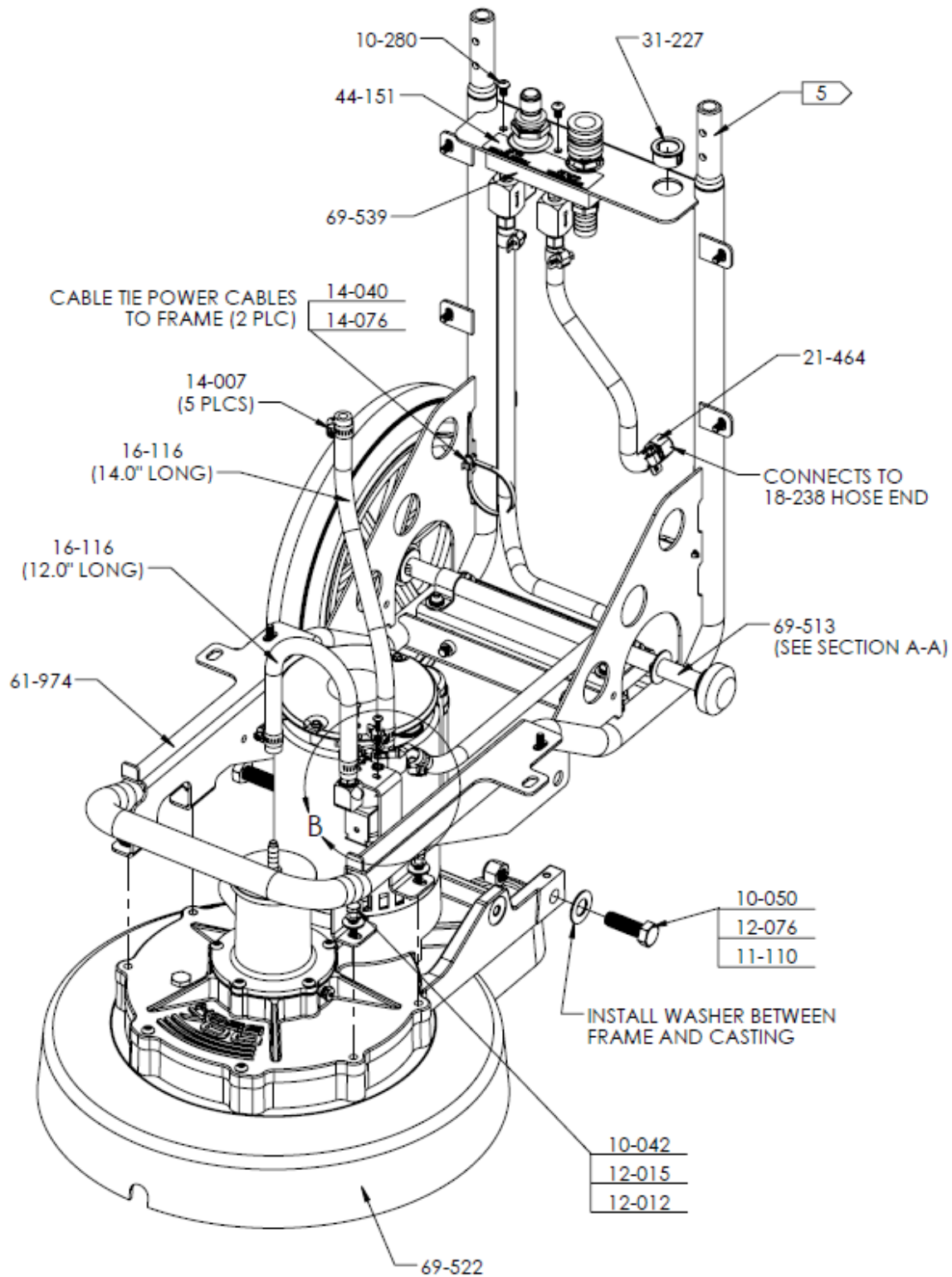
PART NO.	QTY	DESCRIPTION
48-081	1	KIT, LG 370 IMPELLER, GASKET & SEAL (COMES WITH TWO OF EACH IN KIT)



67-040, ASSY, FRAME ASSEMBLY DETAIL VC700

CONFIGURATION SERIAL NO. UP TO 1295

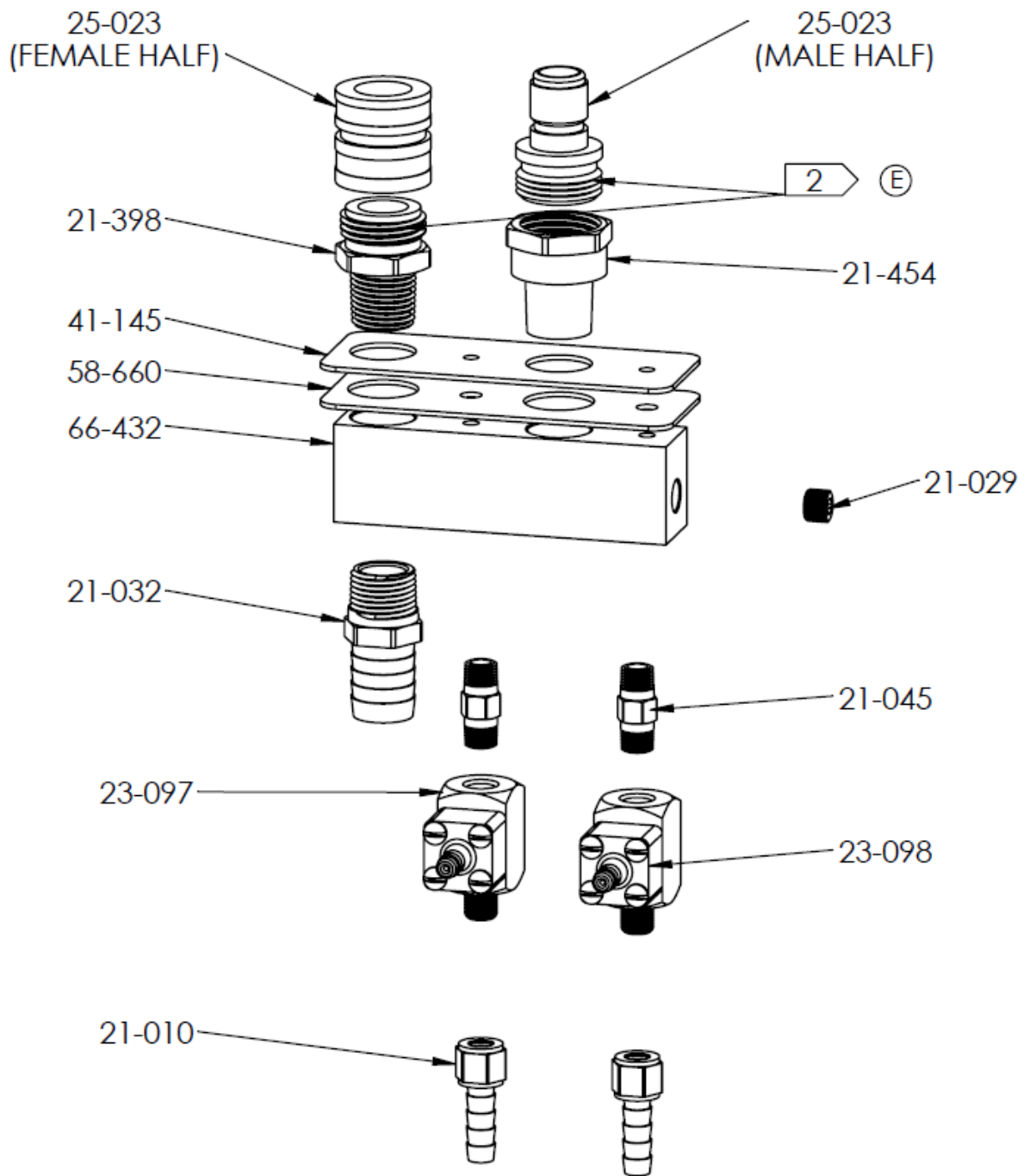
PART NO.	QTY	DESCRIPTION
10-042	4	SCREW, MACH, .25-20 X 1.25 HXHD ZINC
10-050	2	SCREW, MACH 1/2-13 X 1-1/2
10-280	2	SCREW, MACH M6- 1.0 X 10 MM BHSCS ZP
11-110	2	NUT, 1/2-13 NYLOC ZP
12-012	4	WASHER, FLAT 1/4 USS
12-015	4	LKWSR, 1/4 ZINC
12-076	2	WASHER, 5/8 AN .63 ID X 1.187 OD X .06 SS
14-007	5	CLAMP, HOSE #4 SS
14-040	2	TIE, WIRE 8 IN BLACK
14-076	2	PUSH MOUNT – NYLON TIE
16-116	1	HOSE, WATER 5/16 IN X 12 IN LONG
16-116	1	HOSE, WATER 5/16 IN X 14 IN LONG
18-238	1	HOSE, ¼ NPT SELF COILING 25FT
21-464	1	FTTG, BARB 1/4 NPT X 2/15 H BRASS
31-227	1	BUSHING, 1.0 IN #3108
44-151	1	DECAL, HOSE CONNECTIONS VC700
61-974	1	WELDMENT, FRAME VC700
69-513	1	ASSY, WHEEL & AXLE
69-522	1	ASSY, HEAD DRIVE
69-539	1	ASSY, DEMA VALVE MANIFOLD



67-040, ASSY, FRAME ASSEMBLY DETAIL VC700

NEW CONFIGURATION FROM SERIAL No. 1296

PART NO.	QTY	DESCRIPTION
10-042	4	SCREW, MACH, .25-20 X 1.25 HXHD ZINC
10-050	2	SCREW, MACH 1/2-13 X 1-1/2
10-280	2	SCREW, MACH M6- 1.0 X 10 MM BHSCS ZP
11-110	2	NUT, 1/2-13 NYLOC ZP
12-012	4	WASHER, FLAT 1/4 USS
12-015	4	LKWSR, 1/4 ZINC
12-076	2	WASHER, 5/8 AN .63 ID X 1.187 OD X .06 SS
14-007	5	CLAMP, HOSE #4 SS
14-040	2	TIE, WIRE 8 IN BLACK
14-076	2	PUSH MOUNT – NYLON TIE
16-116	1	HOSE, WATER 5/16 IN X 12 IN LONG
16-116	1	HOSE, WATER 5/16 IN X 14 IN LONG
18-238	1	HOSE, ¼ NPT SELF COILING 25FT
21-464	1	FTTG, BARB 1/4 NPT X 2/15 H BRASS
31-227	1	BUSHING, 1.0 IN #3108
44-151	1	DECAL, HOSE CONNECTIONS VC700
61-974	1	WELDMENT, FRAME VC700
69-513	1	ASSY, WHEEL & AXLE
69-522	1	ASSY, HEAD DRIVE
69-539	1	ASSY, DEMA VALVE MANIFOLD

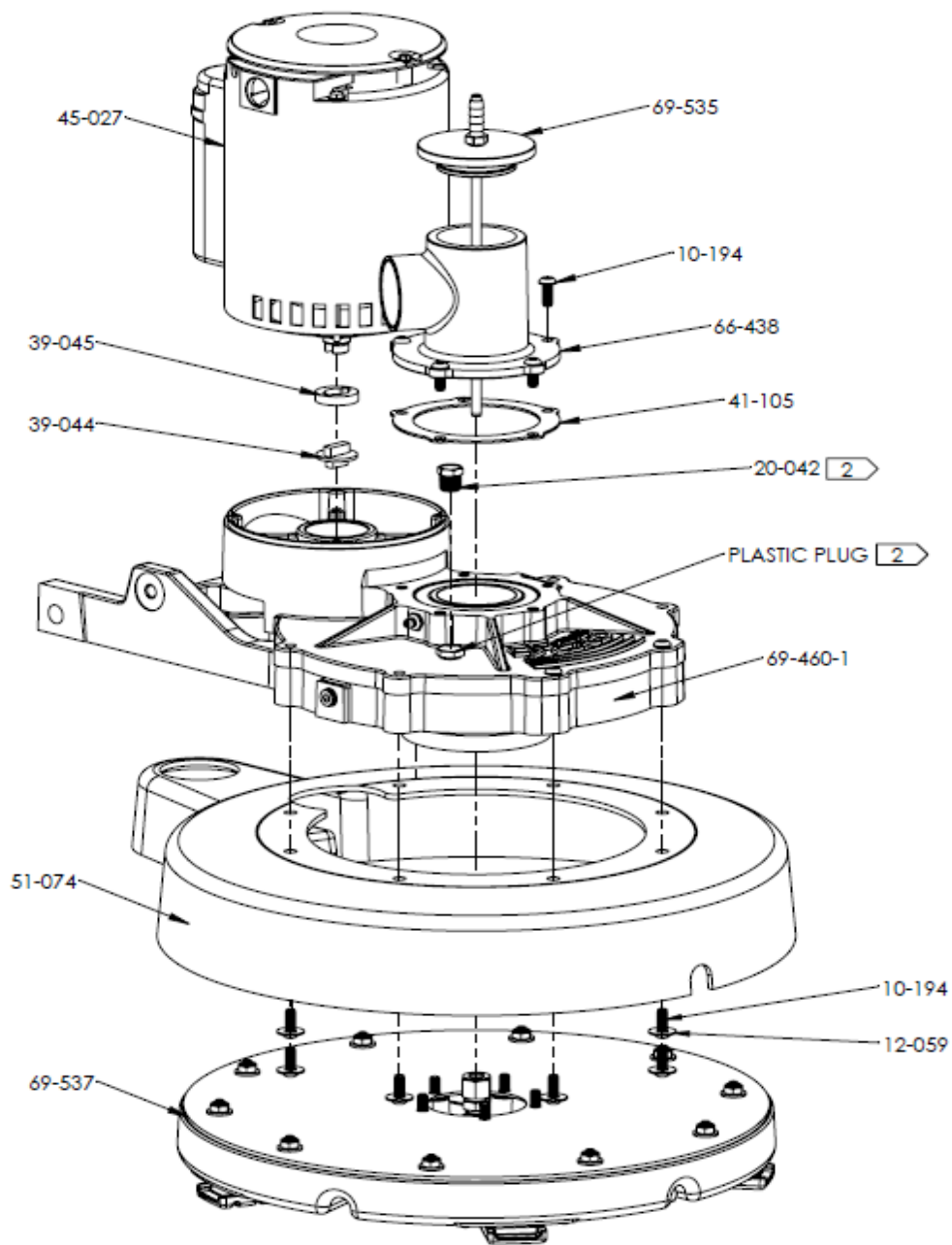


69-539, ASSY, DEMA VALVE MANIFOLD VC 700

FROM SERIAL NO. 1295 AND ABOVE

PART NO.	QTY	DESCRIPTION
21-010	2	FTTG, BRB 1/8 FP X 5/16 H BRASS
21-029	1	PLUG, 1/8 NPT SOCKET HD BRASS
21-032	1	FTTG, BRB 1/2 P X 3/4 H BRASS
21-045	2	NIP, 1/8 IN HEX BRASS
21-398	1	FTTG, GRDN HOSE 1/2 P X 3/4 H
21-454	1	FTTG, 1/2 NPT X F GRDN HOSE
23-097	1	ASSY, DEMA VALVE STEP 1

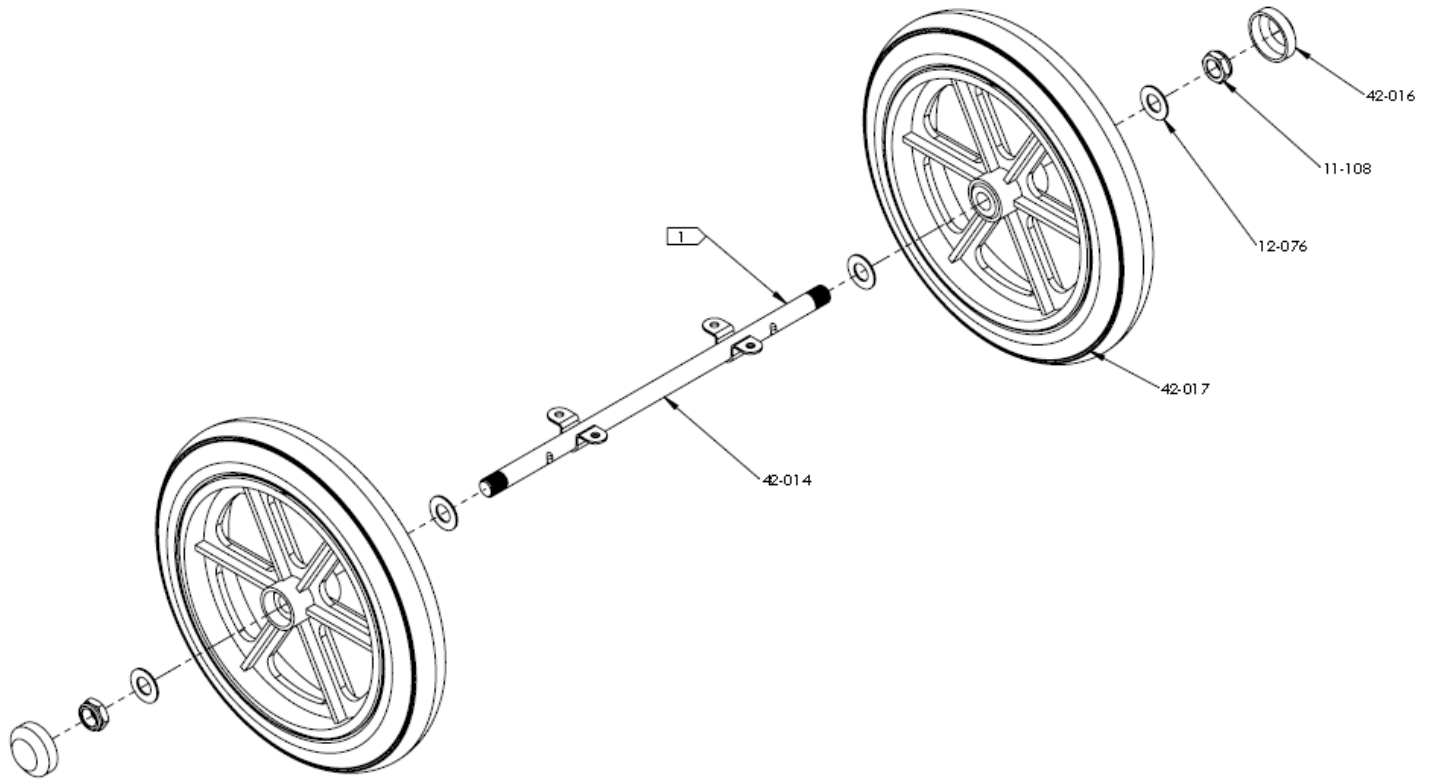
23-098	1	ASSY, DEMA VALVE STEP 2
25-023	1	QC, GARDEN HOSE
41-145	1	GASKET, DEMA MANIFOLD
58-660	1	PLATE, DEMA MANIFOLD GASKET
66-432	1	MANIFOLD, DEMA VALVE



69-522, ASSY, HEAD DRIVE VC700

PART NO.	QTY	DESCRIPTION
10-194	13	SCREW, MACH 1/4-20 X 5/8 BHSCS SS
12-059	8	WASHER, .285 ID X .687 OD X .04 THK SS
20-042	1	VENT PLUG, 1/4 NPT
39-044	1	COUPLING, MOTOR
39-045	1	RETAINER, MOTOR COUPLING
41-105	1	GASKET, VACUUM INLET
45-027	1	MOTOR, .5 HP ELECTRIC
51-074	1	COVER, THERMOFORMED VC700
66-438	1	VACUUM INLET VC700
69-460-1	1	ASSY, GEAR BOX MODIFIED

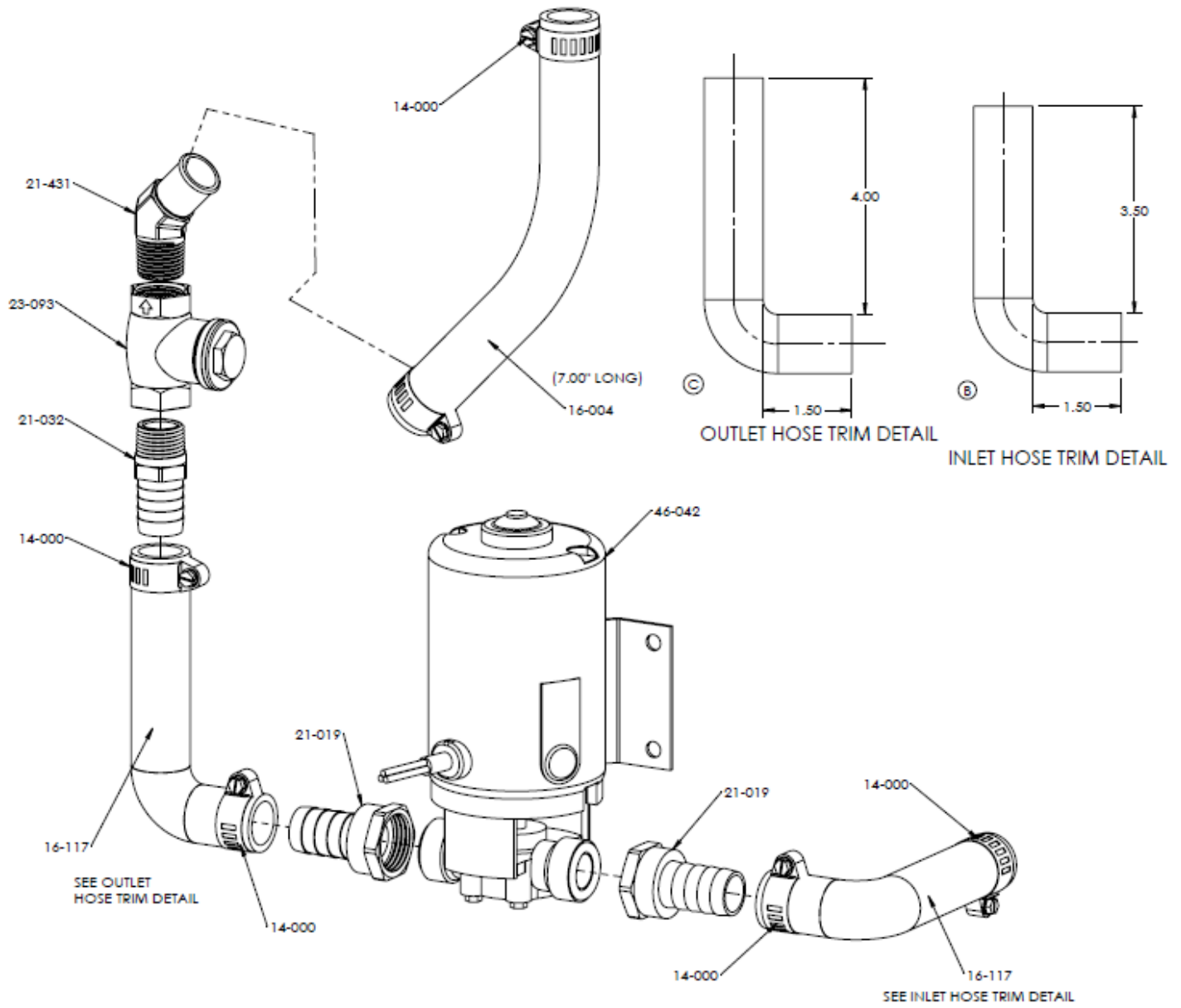
69-535	1	ASSY, VACUUM INLET CAP
69-537	1	ASSY, VACUUM HEAD VC700



69-513, ASSY, WHEEL & AXLE

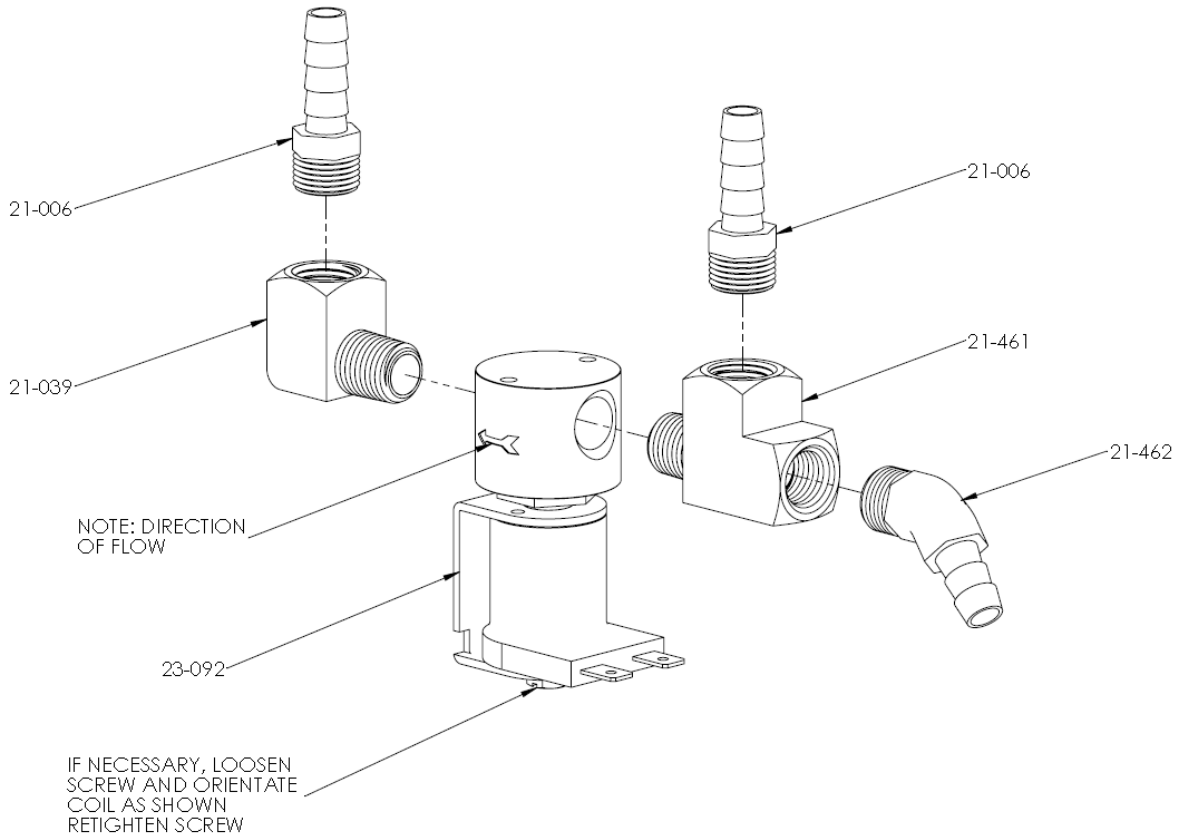
VC700, VT1200

PART NO.	QTY	DESCRIPTION
11-108	2	NUT, 5/8-11 UNC THIN NYLOC ZP
12-076	4	WASHER, 5/8 AN .63 ID X 1.187 OD X .06 SS
42-014	1	AXLE, 5/8 DIA PLATED STEEL
42-016	2	DUST CAP, 12" OD WHEEL NYLON BLK
42-017	2	WHEEL, 12 X 2 X 5/8 BORE GRAY



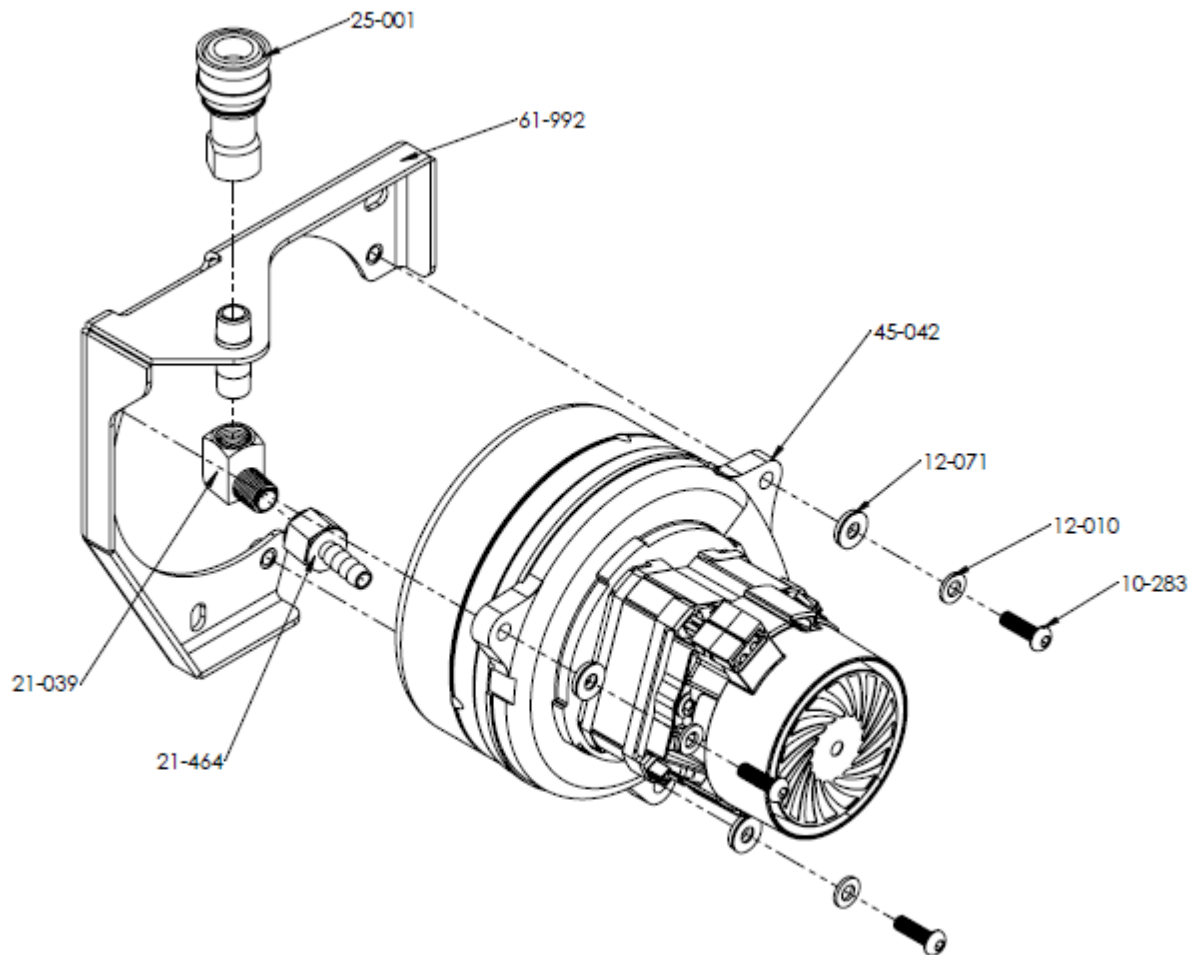
69-523, ASSY, PUMP OUT VC700

PART NO.	QTY	DESCRIPTION
14-000	6	CLAMP, HOSE, #12 X .50 SS
16-004	.58 FT	HOSE, WTR 3/4 IN HRZ 500 FT BULK
16-117	2	HOSE, HEATER 3/4 ID 90 DEG
21-019	2	CONN, GRDN HOS 3/4 H X 3/4 BRB BR
21-032	1	FTTG, BRB 1/2 P X 3/4 H BRASS
21-431	1	ELL, 1/2P X 3/4H 45 DEG BRASS
23-093	1	VALVE, CHECK 1/2 NPT
46-042	1	PUMP, PONY SERIES MODEL 370



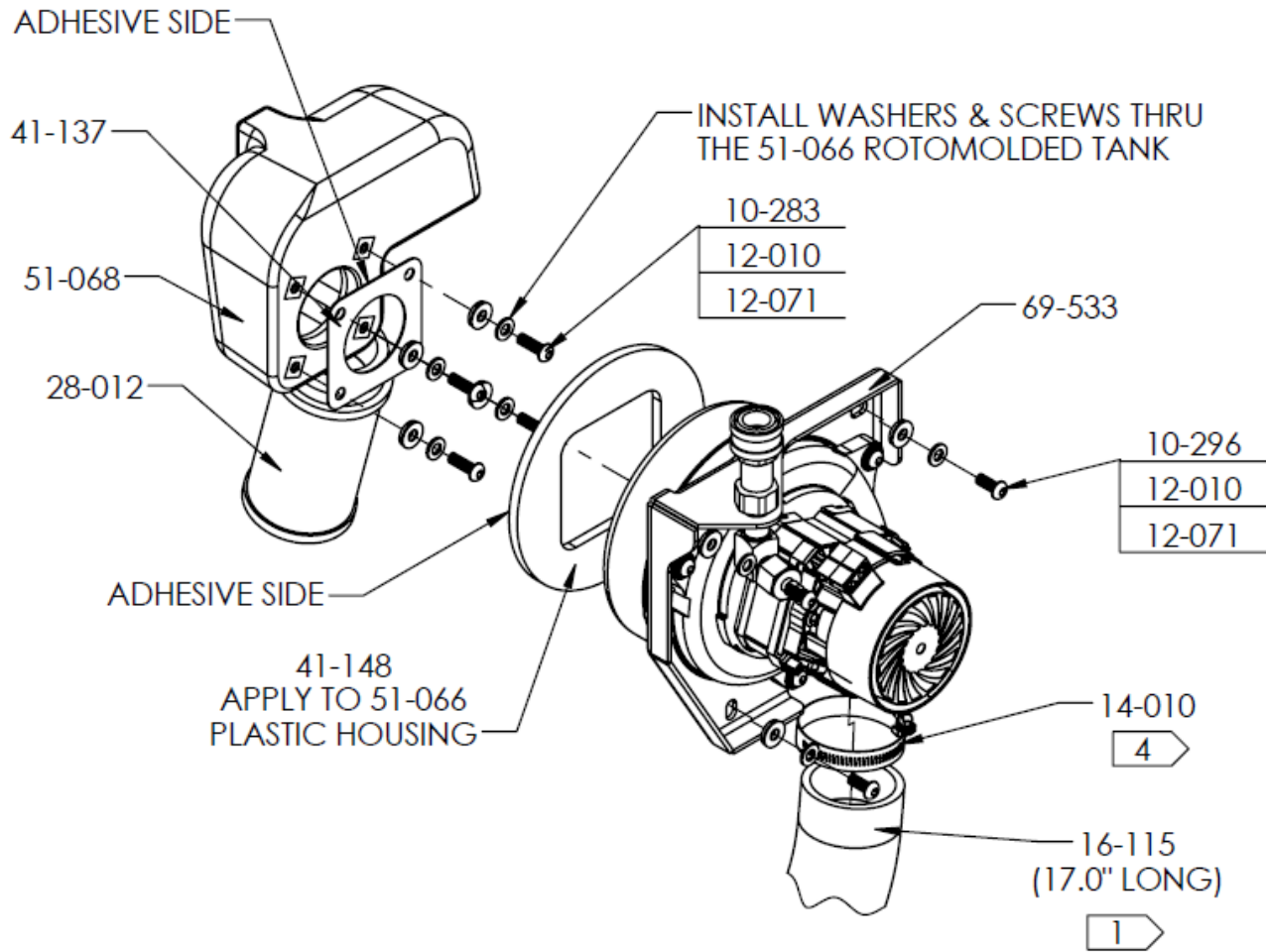
69-528, ASSY, SOLENOID VALVE VC700

PART NO.	QTY	DESCRIPTION
21-006	2	FTTG, BRB 1/4 PX5/16 H BRASS
21-039	1	ELL, 1/4 IN STREET BRASS
21-461	1	TEE, 1/4MP X 1/4 FP X 1/4 FP BRASS
21-462	1	FTTG, BARB 1/4P X 5/16H 45 DEG BRASS
23-092	1	VALVE, SOLENOID 1/4 NPT 120V



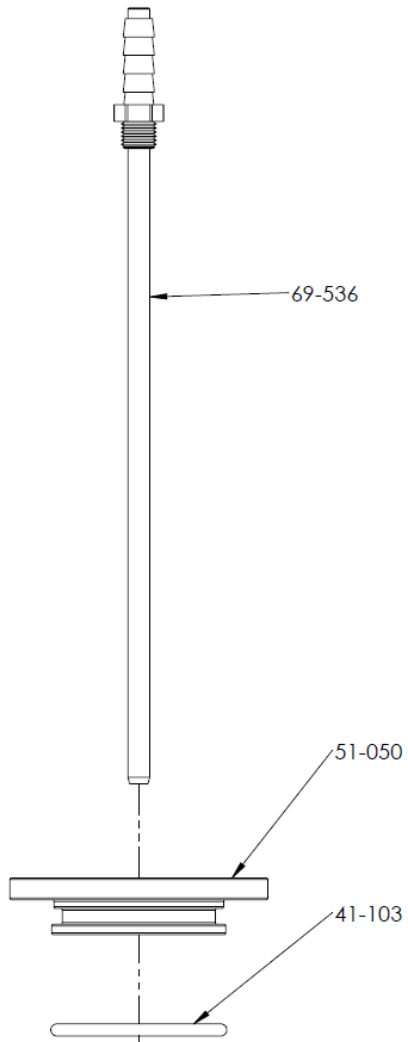
69-533, ASSY, VACUUM BLOWER & QD VC700

PART NO.	QTY	DESCRIPTION
10-283	3	SCREW, MACH M6-1.0 X 20 MM BHSCS ZP
12-010	3	WASHER, FLAT M6 ZP
12-071	3	WASHER, SEALING .27 ID X .625 OD
21-039	1	FILTER, INLINE
21-464	1	FTTG, BARB 1/4 NPT X 5/15 H BRASS
25-001	1	DSC, 1/4F X 1/4FP BRASS
45-042	1	BLOWER ASSY 120V 1350W 1SP 2 STAGE
61-992	1	WELDMENT, BLOWER & QD MTG BRACKET



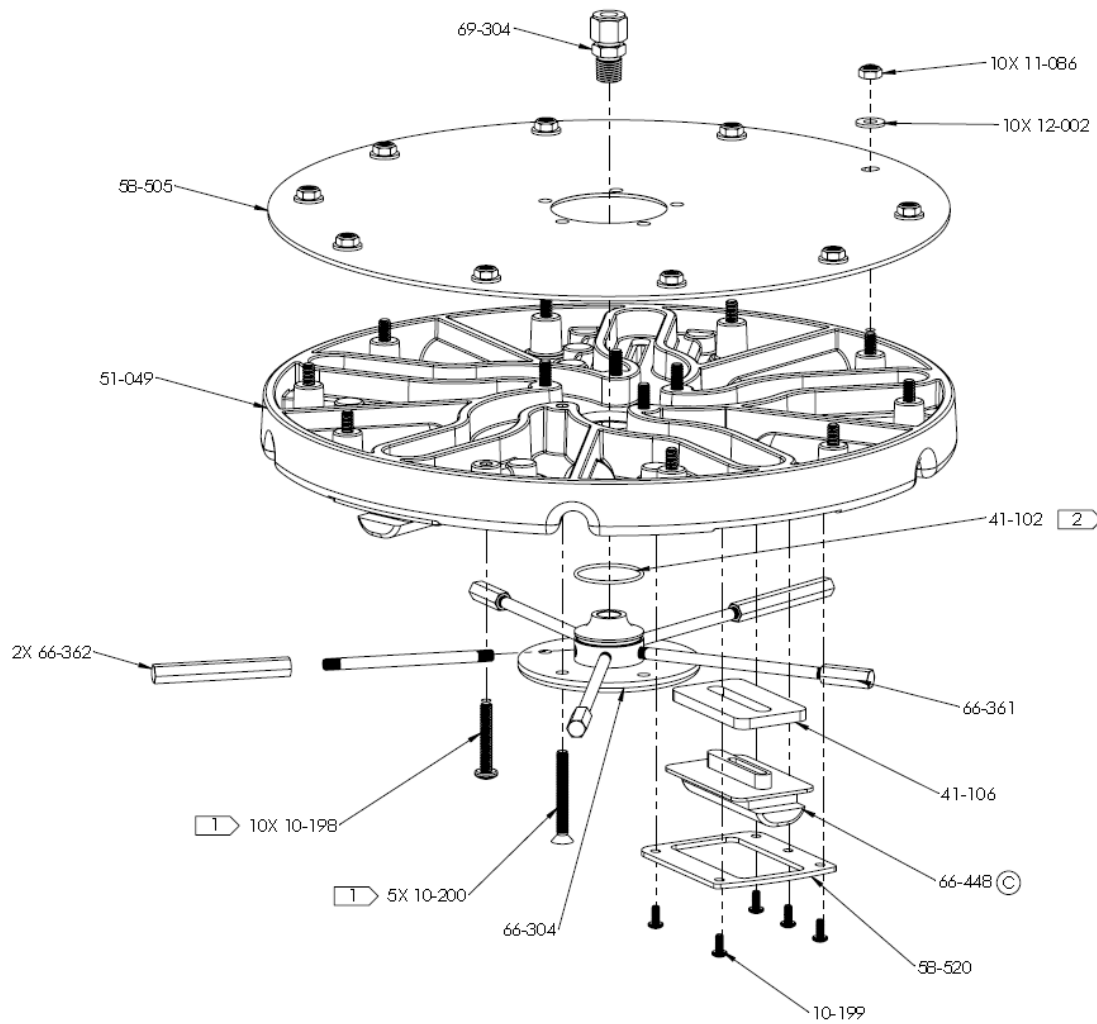
BLOWER ASSEMBLY DETAIL #2

PART NO.	QTY	DESCRIPTION
10-283	4	SCREW, MACH M6-1.0 X 20 MM BHSCS ZP
10-296	3	SCREW, MACH M6-1.0 X 16 MM BHSCS ZP
12-010	7	WASHER, FLAT M6 ZP
12-071	7	WASHER, SEALING .27 ID X .625 OD
14-010	1	CLAMP, HOSE #32 SS
16-115	1	HOSE, FLEX 2.0 IN R4 CLR X 17" LONG
28-012	1	FLOAT, SHUT OFF
41-137	1	GASKET, VACUUM CHANNEL VC700
44-148	1	DECAL, VERSACLEAN
51-068	1	ROTMOLD, VACUUM CHANNEL VC700
69-533	1	ASSY, VACUUM BLOWER & QD



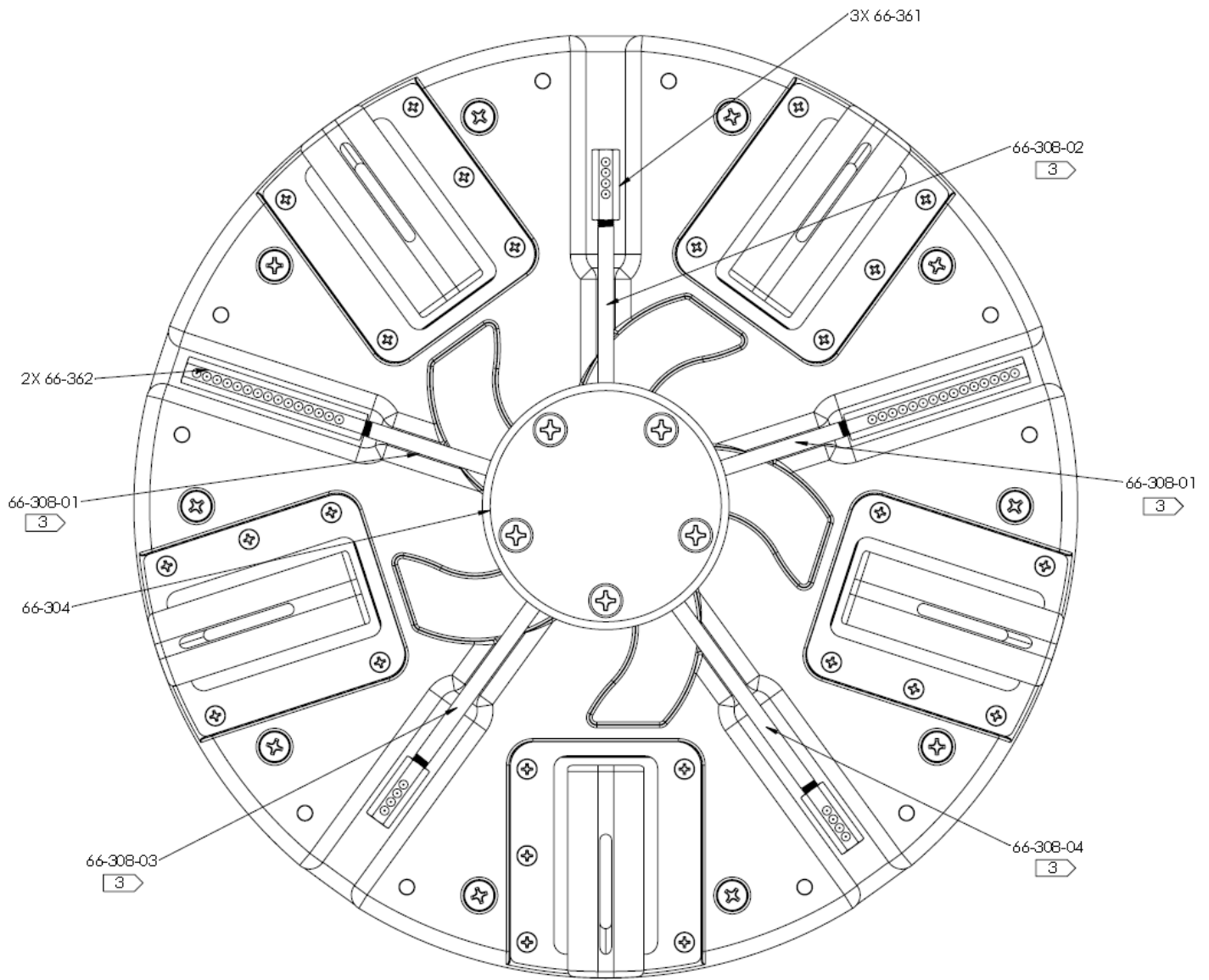
69-535, ASSY, VACUUM INLET CAP VC700

PART NO.	QTY	DESCRIPTION
41-103	1	O-RING, AS568A-224 BROWN VITON
51-050	1	MOLDING, VACUUM INLET CAP
69-536	1	ASSY, SOLUTION INLET TUBE



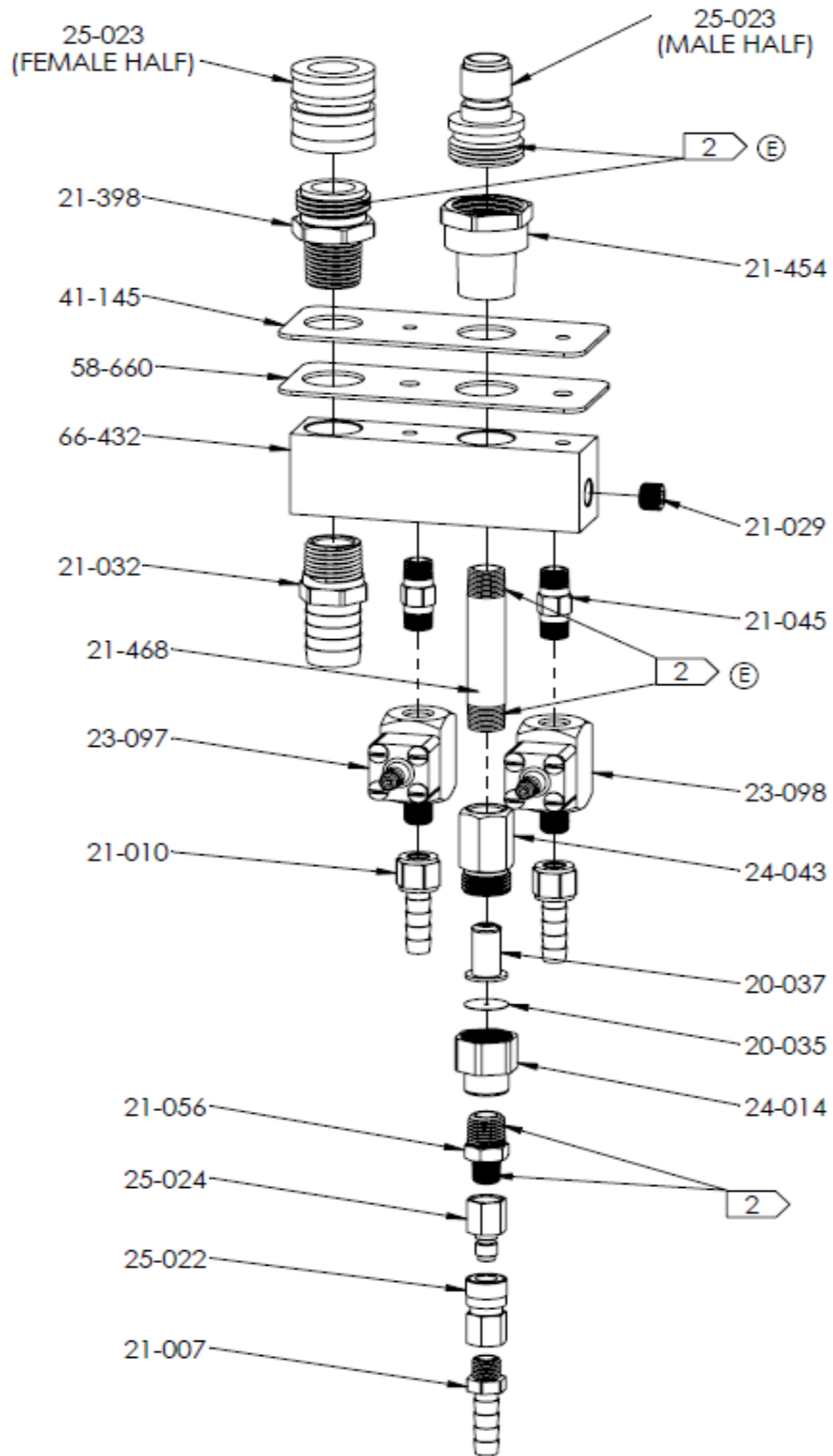
69-537, ASSY VACUUM HEAD VC700

PART NUMBER	QUANTITY	DESCRIPTION
10-198	10	SCREW, MACH, .25-20 X 1.50 PHP SS
10-199	25	SCREW, MACH 8-32 X 3/8 PHP SS
10-200	5	SCREW, MACH 1/4-20 X 2.0 FHP SS
11-086	10	NUT, .250-20 SS THIN NYLOK
12-002	10	WASHER, FLAT 1/4 SS ANC
41-102	1	O-RING, AS568A-028 BROWN VITON
41-106	5	GASKET, VACUUM SHOE
51-049	1	ROTARY TOOL HEAD
58-505	1	PLATE, VACUUM CHAMBER COVER
58-520	5	PLATE, SHOE COVER
66-448	5	VACUUM SHOE, ROUND TOP NAT ACETAL
69-304	1	HUB, HEAD MOUNTING



69-537, ASSY VACUUM HEAD VC700 (SPRAY BAR VIEW)

PART NUMBER	QUANTITY	DESCRIPTION
66-308-01	2	TUBE, SPRAY HEAD
66-308-02	1	TUBE, SPRAY HEAD
66-308-03	1	TUBE, SPRAY HEAD
66-308-04	1	TUBE, SPRAY HEAD
66-361	3	HEAD, SPRAY NOZZLE (4) HOLE
66-362	2	HEAD, SPRAY NOZZLE (15) HOLE
66-304	1	HUB, HEAD MTG

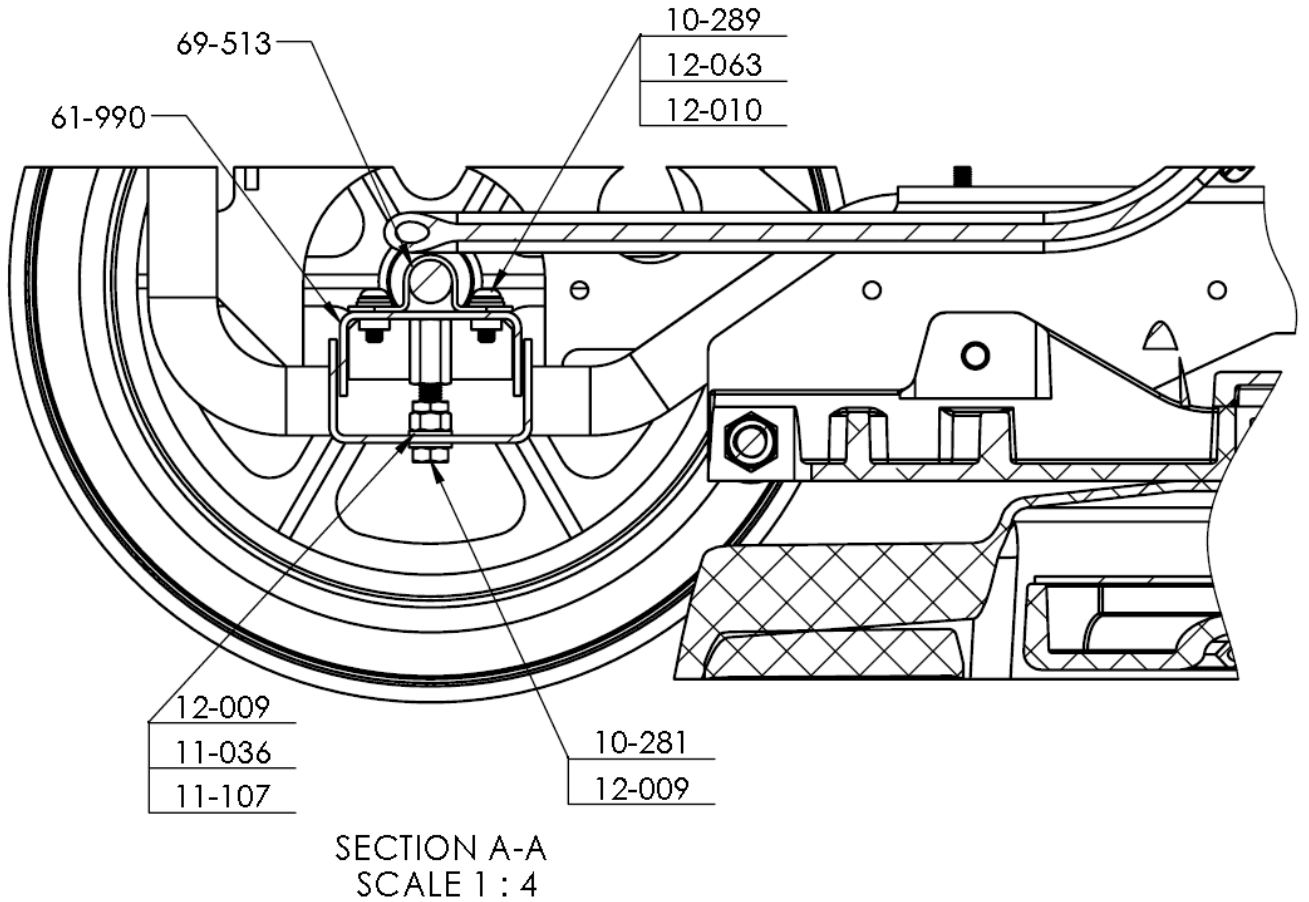


69-539, ASSY, DEMMA VALVE MANIFOLD VC700

THROUGH SERIAL NO. 1295 ONLY

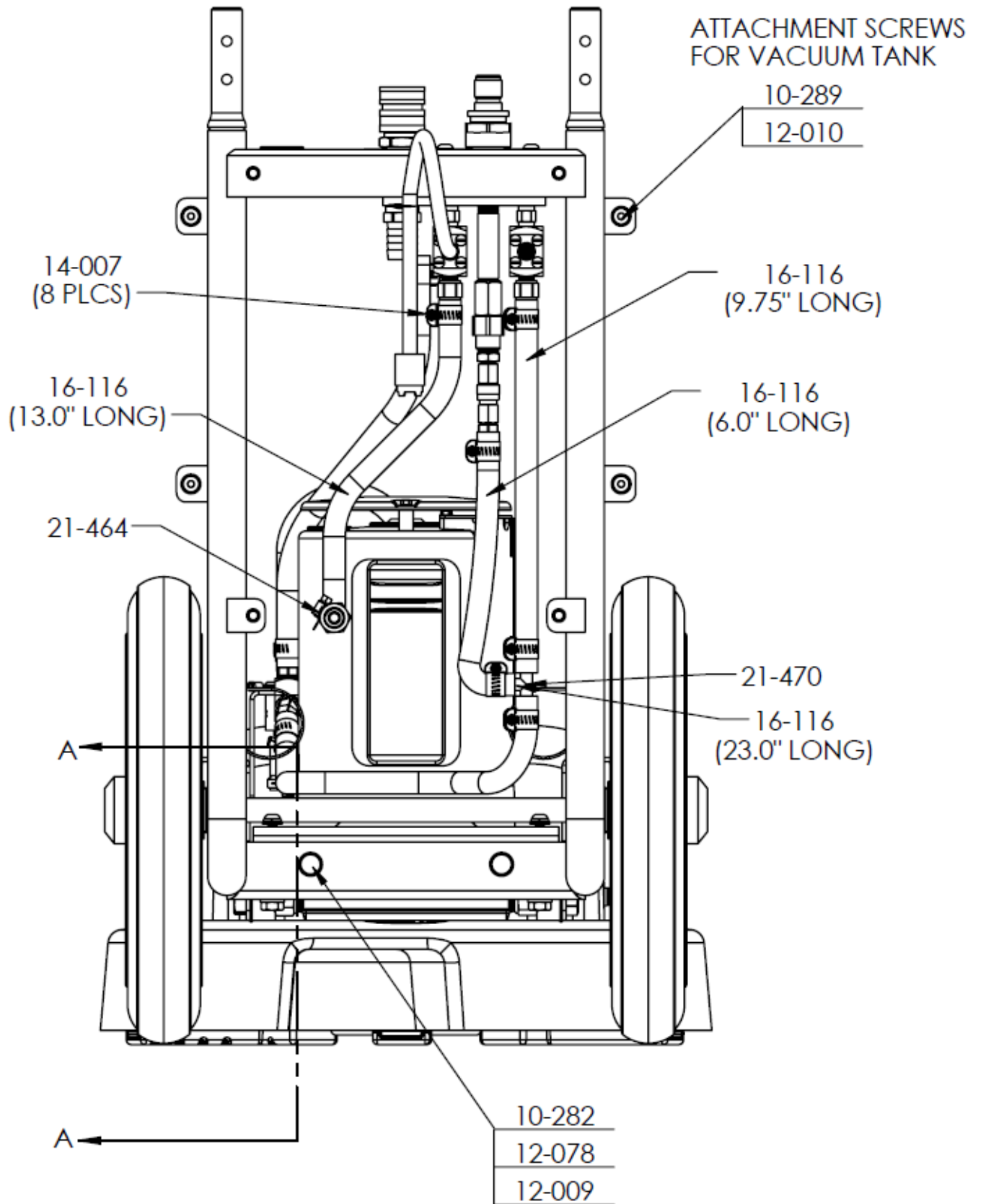
PART NO.	QTY	DESCRIPTION
20-035	1	ORIFICE - .057 DIAMETER SS
20-037	1	STRAINER - JET 100 MESH
21-007	1	FTTG, BRB 1/8 P X 5/16 H BR
21-010	2	FTTG, BRB 1/8 FP X 5/16 H BRASS

21-029	1	PLUG, 1/8 NPT SOCKET HD BRASS
21-032	1	FTTG, BRB 1/2 P X 3/4 H BRASS
21-045	2	NIP, 1/8 IN HEX BRASS
21-056	1	NIP, HEX 1/4 X 1/8 BRASS
21-398	1	FTTG, GRDN HOSE 1/2 P X 3/4 H
21-454	1	FTTG, 1/2 NPT X F GRDN HOSE
21-468	1	NIPPLE, 1/4 NPT X 2-1/2 IN BRASS
23-097	1	ASSY, DEMA VALVE STEP 1
23-098	1	ASSY, DEMA VALVE STEP 2
24-014	1	FITTING - CONN 1/4 FNPT X 11/16 F BRASS
24-043	1	CONN, 1/4 FNPT X 11/16-16 M BRASS
25-022	1	DSC, 1/8 SOCKET X 1/8FP BR
25-023	1	QC, GARDEN HOSE
25-024	1	DSC, 1/8 PLUG X 1/8 MP BR
41-145	1	GASKET, DEMA MANIFOLD
58-660	1	PLATE, DEMA MANIFOLD GASKET
66-432	1	MANIFOLD, DEMA VALVE



ASSY, AXLE VIEW VC700

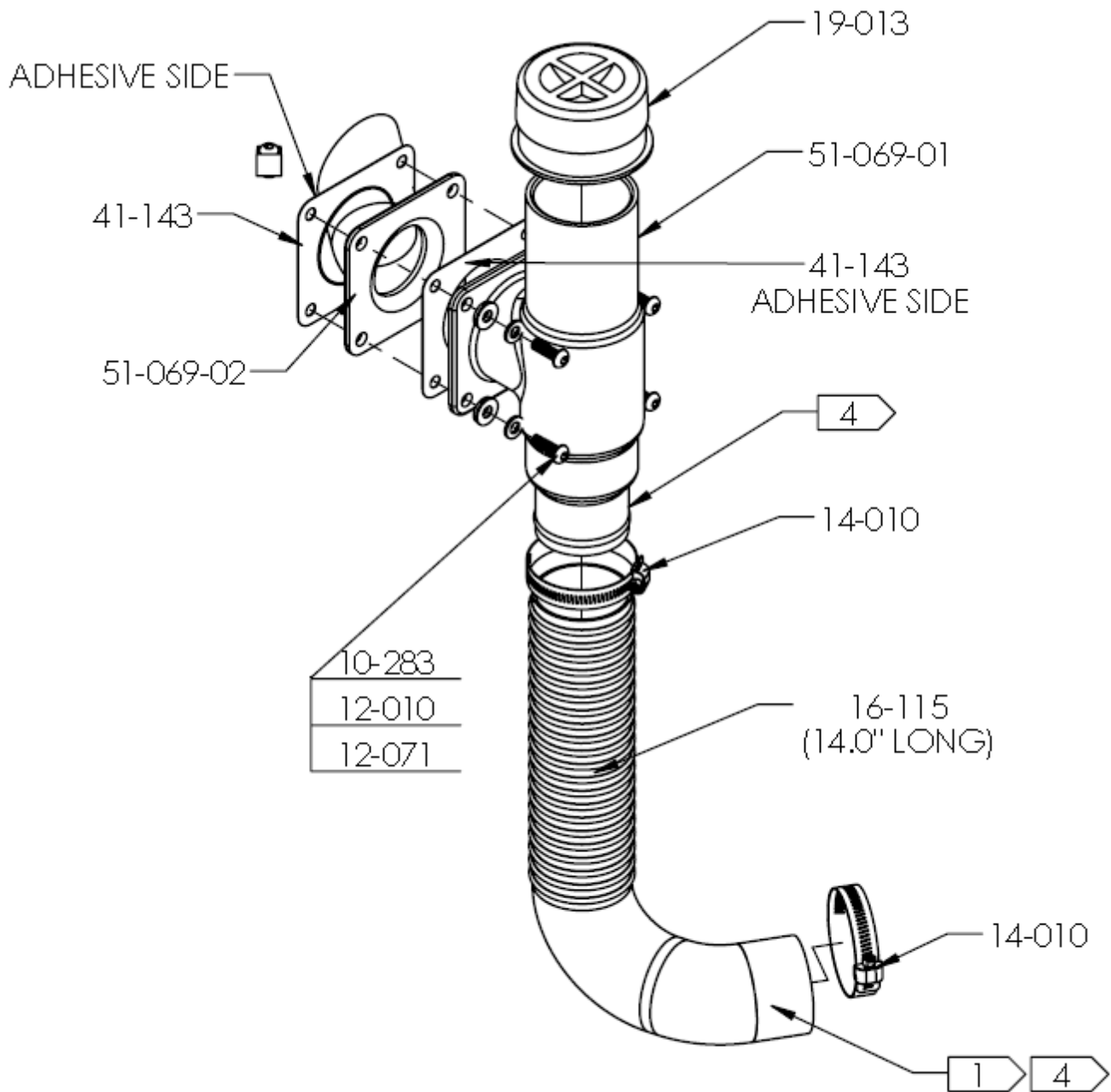
PART NO.	QTY	DESCRIPTION
10-281	2	BOLT, MACH M8-1.25 X 40 MM HEXHD LP ZP
10-289	4	SCREW, MACH M6-1.0 X 12 MM BHSCS ZP
11-036	2	NUT, M8 X 1.25 HEX JAM
11-107	2	NUT, M8-1.25 X 4MM HALF NUT ZP
12-009	4	WASHER, FLAT M8 ZINC
61-990	1	WELDMENT, AXLE MOUNTING BRACKET
69-513	1	ASSY, WHEEL & AXLE



ASSY, HOSE BACK VIEW VC700

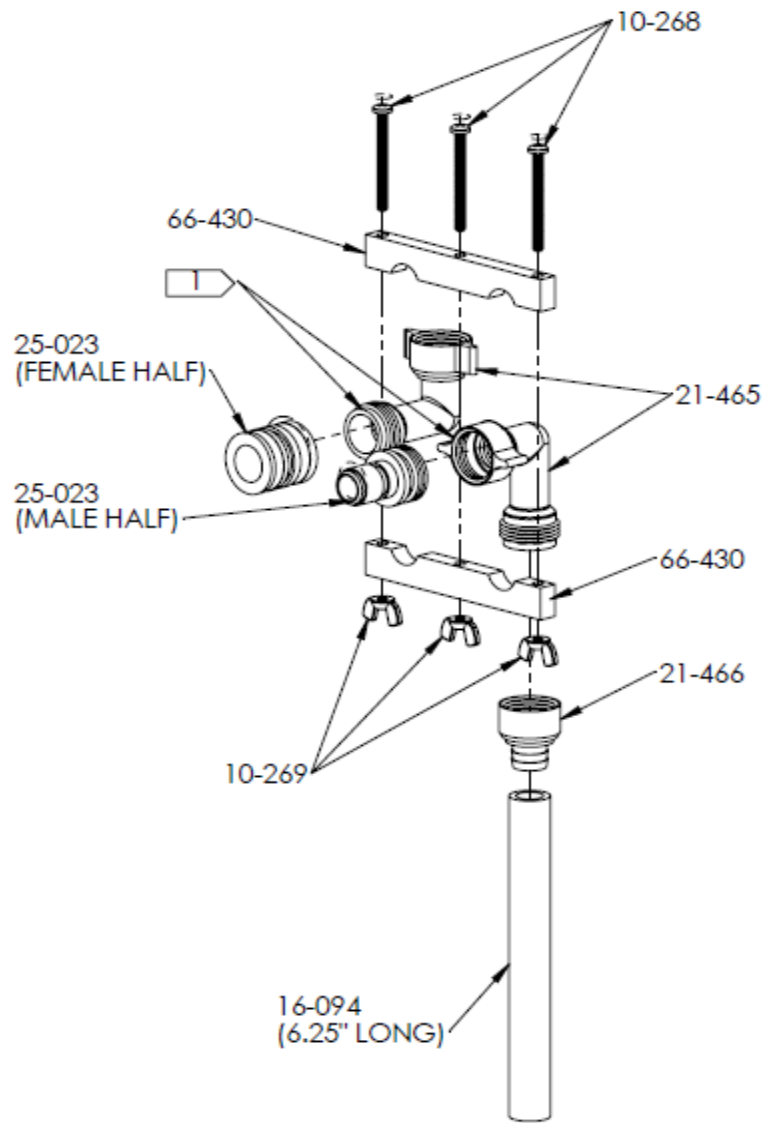
THROUGH SERIAL NO. 1295 ONLY

PART NO.	QTY	DESCRIPTION
14-007	8	CLAMP, HOSE #4 SS
16-116	1	HOSE, WATER 5/16 IN 6" LONG
16-116	1	HOSE, WATER 5/16 IN 9.75" LONG
16-116	1	HOSE, WATER 5/16 IN 13" LONG
16-116	1	HOSE, WATER 5/16 IN 23" LONG
21-464	1	FTTG,BARB ¼ NPT X 5/16 H BRASS
21-470	1	TEE, 5/16 H BARB HYLON



VACUUM TEE ASSEMBLY DETAIL

PART NO.	QTY	DESCRIPTION
10-283	4	SCREW, MACH M6-1.0 X 20 MM BHSCS ZP
12-010	4	WASHER, FLAT M6 ZP
12-071	4	WASHER, SEALING .27 ID X 9.0 OD ZP
14-010	2	CLAMP, HOSE #32 SS
16-115	1	HOSE, FLEX 2.0 IN R4 CLR X 14" LONG
19-013	1	CAP, 2-1/2 IN RUBBER
41-143	2	GASKET, VACUUM INLET
51-069-01	1	ROTOMOLD, VACUUM INLET DETAIL TEE VC700
51-069-02	1	ROTOMOLD, VACUUM INLET TUBE VC700



68-213 VC700 FAUCET ADAPTER KIT

PART NO.	QTY	DESCRIPTION
10-268	3	SCREW, MACH M4-0.7 X 8 MM PHP ZP
10-269	3	NUT, WING 10-24 BRASS
16-094	.52FT	HOSE, 1/2 ID CLEAR 6.25 INCH LONG
21-465	2	ELBOW, BRASS HOSE 90 DEG
21-466	1	ADAPTER, FGH X 1/2 BARB NYLON
25-023	1	QC, GARDEN HOSE SPLIT IN HALF TO GET BOTH PARTS (MALE/FEMALE)
48-079	1	KIT, NEOPERL FAUCET ADAPTER
66-430	2	CLAMP, FAUCET ADAPTER