



LEADING WATER DAMAGE RESTORATION EQUIPMENT

BUILT IN USA
WITH GLOBALLY SOURCED MATERIALS

TRUST YOUR REPUTATION TO DRI-EAZ THE **INDUSTRY LEADER** FOR 45 YEARS

- » Rugged reliability
- » Optimized performance
- » Time-saving remote monitoring
- » Experienced US-based technical support

HIGH-PERFORMANCE EXTRACTION

Extracting water thoroughly is critical to mitigating flood damage and faster drying.

HVE 3000 FLOOD EXTRACTOR ITEM #107977

- More than an extractor - #1 choice for sewage cleanup
- Easy-drain tank holds 12 gallons when required
- Clear-view filter catches debris
- HEPA filter cleans exhaust air as needed
- Industrial automatic pumpout delivers up to 50 gpm

TANK CAPACITY	12 gal. 45 L.
AMPERAGE	12A (Blower 1+Pumpout) 13.5A (+Blower 2)
MAXIMUM PERFORMANCE RATINGS	Both blowers: 12 in. Hg (164 in. H2O) Pumpout discharge rate, 1 1/2 in. outlet: 50 gpm Pumpout discharge rate, 3/4 in. outlet: 12 gpm



ROVER HVE ITEM #112125

- Consistent, thorough deep extraction
- Easily navigate around corners

EXTRACTION TOOL ITEM #104221

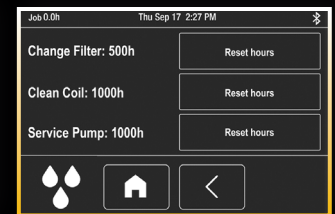
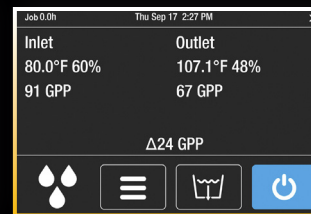
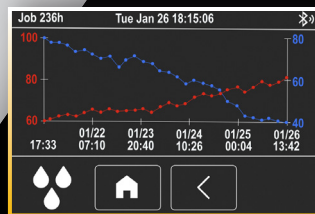
- Cuts up to a third off extraction time
- Ergonomic, rugged stainless wand



ALL SURFACE EXTRACTION TOOL ITEM #128122

- Maximizes flood extraction on carpets and hard surfaces when used with the HVE 3000
- Requires 1.5" vacuum hose (#128124)

DEHUMIDIFICATION



» Drying Trend Graph

» Real-time Temperature and Humidity

» Error Alerts » Maintenance Prompts

LGR 5000Li DEHUMIDIFIER ITEM #127690

- Quiet, lightweight with heavy-duty telescoping handle
- Xactimate "Large" dehu that fits anywhere
- Fast access for filter changes and maintenance
- Stack 2 to roll onto the job, stack 3 for storage
- Built-in Command Hub technology for fast onsite and remote monitoring, plus maintenance tracking

DIMENSIONS (H x W x D)	19.5 x 20 x 16 in. 49.5 x 50.8 x 40.6 cm
USE WEIGHT	69 lbs. 31.3 kg
WATER REMOVAL (MAX)	164 pints/day 77.6 liters/day
WATER REMOVAL (AHAM)	80 pints/day 37.9 liters/day
OUTLET AIRFLOW (MAX)	215 CFM 365 CMH
CONDENSATE PUMP	Included - internal
POWER 115V	5.1 amps



LGR 7000XLi DEHUMIDIFIER ITEM #108110

- Optimized water removal at every job stage
- Xactimate XL in highly portable unit
- Strong performance even in low humidity conditions
- Onboard Command Hub for 24/7 management of moisture issues

DIMENSIONS (H x W x D)	33.5 x 20 x 20 in. 85 x 51 x 51 cm
USE WEIGHT	106 lbs. 48.1 kg
WATER REMOVAL (MAX)	235 pts./day 111.2 liters/day
WATER REMOVAL (AHAM)	130 pints/day 61.5 liters/day
OUTLET AIRFLOW	280 CFM 476 CMH
CONDENSATE PUMP	Included - internal
POWER 115V	8.8 amps



LGR 3500i DEHUMIDIFIER ITEM #110133

- Xactimate XXL water removal!
- Powerhouse moisture removal
- Command Hub remote monitoring

DIMENSIONS (H x W x D)	40.5 x 24 x 23 in. 103 x 61 x 58 cm
USE WEIGHT	157 lbs 71.2 kg
WATER REMOVAL (MAX)	270 pts./day 127.8 L/day
WATER REMOVAL (AHAM)	170 pints/day 80.4 liters/day
OUTLET AIRFLOW	400 CFM 679.7 CMH
CONDENSATE PUMP	Included - internal
POWER 115V	0.8 amps

LGR 6000Li DEHUMIDIFIER ITEM #103614

- Fastest response to changing conditions
- Rolls up and down stairs smoothly
- Swift 4-bolt access for cleaning
- Quiet operation for occupied spaces
- Command Hub enables remote monitoring and control

DIMENSIONS (H x W x D)	32.1 x 19.8 x 20.0 in. 81.5 x 50.3 x 50.8 cm
USE WEIGHT	104 lbs. 47.2 kg
WATER REMOVAL (MAX)	219 pts./day 103.6 liters/day
WATER REMOVAL (AHAM)	100 pints/day 47.3 liters/day
OUTLET AIRFLOW	320 CFM 544 CMH
CONDENSATE PUMP	Included - internal
POWER 115V	6.5 amps



Use the free app to monitor and manage drying jobs remotely.
SCAN FOR FULL INFO ▶





DRYING AND VENTILATION

**BUILT IN
USA**
WITH GLOBALLY SOURCED MATERIALS

SUPERIOR DRYING EFFICIENCY, RELIABILITY AND DURABILITY



VELO® PRO VARIABLE SPEED AIRMOVER

ITEM #114969

VELO 2-SPEED AIRMOVER

ITEM #125470

Patented design dries faster than other airmovers, is easy to carry and stacks compactly for storage or hauling multiple units.

- Adjust speed for full power or quieter, low-amp operation
- GFCI outlet to safely daisy-chain up to 10 Velo Pros on low (7 Velos on low) to reduce trip hazards, plus hospital-grade cord
- Dry floors, walls, ceilings and stairwells with versatile drying positions

VELO PRO
POWER 1.2-1.9 AMPS
MOTOR 0.25 HP
SPEEDS VARIABLE

VELO
POWER 1.65-2.1 AMPS
MOTOR 0.25 HP
SPEEDS 2

SAHARA PRO X4 TURBODRYER®

ITEM #124315

Long-life performer with three speeds. GFCI outlets to connect multiple units. Uses just 2.5 amps (max.).

- Rotary variable speed control
- Daisy-chain capability with convenience outlet and circuit breaker
- Tested 867 CFM and 0.92 in. static pressure (H2O)
- Stacks on side for storage
- Underside drying vent eliminates wet spots



POWER 1.9 - 2.5 AMPS
MOTOR 0.33 HP
SPEEDS 3-SPEEDS
CFM 867 FT/MIN

DRI-POD AIRMOVER

ITEM #121657

Use the Dri-Pod to dry carpets and hard surfaces fast with 360-degree airflow!

- Dries carpets and hard surface floors quickly after cleaning, leaks or spills
- Onboard convenience outlet to connect up to 8 units
- Dry confined spaces. Use inside cabinets, closets or bathrooms—it's only 15 inches wide and fits almost anywhere



POWER 1.0 AMPS
WEIGHT 10.5 LB / 4.8 KG
CFM 750 FT/MIN

VELO HEPA FILTER KIT

ITEM #105627

Use with the Velo or Velo Pro for convenient HEPA air scrubbing on restoration jobs. The kit features a HEPA media filter and pre-filter to minimize dust and particulates during restoration.

AXIAL AIRMOVERS

VORTEX AXIAL AIRMOVER

ITEM #116594

Moves high volumes of air for high pressure ventilation up to 125 ft!

- Powerful 1.0 hp motor
- Stackable for storage!
- Operate stand alone or with Sto&Go ducting (Item #113260)



POWER 7.4 AMPS
MOTOR 1.0 HP
SPEEDS 1-SPEED
CFM 2041 FT/MIN



STEALTH AV3000 AXIAL AIRMOVER

ITEM #113164

Versatile, high-velocity design ventilates odors and fumes and dries large spaces fast.

- Direct airflow where needed using integrated pivot-and-lock stand
- Quiet operation AND high-intensity airflow with specially engineered fan blades and variable speed
- Reduce trip hazards by connecting up to 4 airmovers with convenience outlet, hospital-grade power cord and lit plug

POWER 2.7 AMPS
MOTOR .46 HP
SPEEDS VARIABLE
CFM 2600 FT/MIN

**BUILT IN
USA**
WITH GLOBALLY SOURCED MATERIALS

DEFENDAIR® 400 AIR SCRUBBER

- **Filters out 99.97% of dust and mold** with prefilter and true HEPA filter media
- **Simple to operate and duct**
- Alerts when HEPA filter change needed
- **Lightweight and stacks securely** for compact storage and transport
- **Connect up to 5 units** using onboard GFCI outlet

ITEM	127312
AIRFLOW	400 CFM
STATIC PRESSURE	2.6 IN. 6.6 CM
WEIGHT	29 LBS. 13.2 KG
DIMENSIONS (HXDXW)	21.7 X 22.9 X 17.7 IN.
POWER (115V, 60HZ)	2.2 AMPS
DUCT SIZE	12 IN. 30.5 CM

FILTERS

- Primary HEPA Filter - #111333
- Prefilters - #127974



BUILT IN USA
WITH GLOBALLY SOURCED MATERIALS



HEPA 700 & MEDICLEAN® AP 700

BOTH AIR SCRUBBERS / NEGATIVE AIR MACHINES:

- **Quieter operation** for use in occupied spaces
- **Filter out dust, mold, smoke, odors and fumes** with prefilter, optional activated carbon and true HEPA filter media
- **Standard filters deliver 99.99% efficiency with .1-.5 micron particles** and the unit passes stringent independent testing to ensure filtration integrity
- **Lightweight and stacks securely** for compact storage and transport
- **Simple negative air setup** with precise variable CFM and easy ducting
- **24/7 remote monitoring and control** using mobile app to update firmware and ensure continuous air filtration

SCAN FOR FULL INFO:



ITEM #125105 (HEPA 700) & ITEM #125494 (AP 700)

POWER	1.5 - 3 AMPS, 115V, 60 HZ
DIMENSIONS	23 X 17 X 26 IN.
(H x D x W)	57.9 X 43.3 X 65.9 CM
DUCT SIZES	INLET & OUTLET: 14 IN. 35.6 CM
USE WEIGHT	42 LBS 19 KG
AIR MOVEMENT	VARIABLE TO 700 CFM
SAFETY MARKS	ETL LISTED TO UL/CSA STANDARDS
CONTROLS	COMMAND HUB DISPLAYS HEPA FILTER STATUS; MONITOR/CONTROL REMOTELY WITH FREE MOBILE APP

PLUS - MEDICLEAN AP 700 ALSO:

- Helps protect occupants and workers with **UVC LED** that kills **99.98% of viruses** on the HEPA filter
- Includes antimicrobial additives in the housing to **inhibit the growth of bacteria and mildew** on the unit's housing (EPA Reg. No. 93407-3)



HEPA 700 / AP 700 FILTERS

PRIMARY HEPA FILTER (HEPA 700 & AP 700)

ITEM #125028 (8 PK.; 1 FILTER INCLUDED WITH HEPA 700)
Synthetic HEPA filter media efficiency of 99.99% for 1.0-5.0 micron particles



2-INCH PREFILTER (HEPA 700)

ITEM #125026 (6 PK.; 1 FILTER INCLUDED WITH HEPA 700)
Sturdy, high capacity filter protects the longevity of HEPA filters



1-INCH PREFILTER (HEPA 700 & AP 700)

ITEM #125029 (12 PK.)
MERV 8 paper filter protects primary HEPA filter (single pre-filter for AP 700; use with Activated Carbon Filter in HEPA 700)



ACTIVATED CARBON FILTER (HEPA 700 & AP 700)

ITEM #125027 (4 PK.)
Adsorbs odors, smoke and fumes from construction, sewage backups, wildfires and more





TRUSTED **ANTIMICROBIAL** SOLUTIONS

THE INDUSTRY'S MOST REQUESTED ANTIMICROBIAL AFTER FLOODING



UNSCENTED
FOR HVAC
ITEM #110576

MINT
ITEM #108382

MEDICLEAN DISINFECTANT SPRAY PLUS

EPA Registration #70385-5, Ready-to-Use, Mint or Fragrance Free*

AFTER CLEANING, USE TO **DISINFECT AND DECONTAMINATE**

- Broad spectrum disinfectant for use after cleaning - effective against bacteria, fungus, mold and mildew
- Use for **decontamination applications** including flooding, sewage backups, removal of carcasses and more.*
- Can be used on hard surfaces plus carpets, upholstery and mattresses

Not available in California, Puerto Rico or Canada. Available in 5 gal. pails.

- » PREVENT SPREAD OF VIRUSES AND INFECTION
- » MANAGE MOLD AND MILDEW
- » CLEAN, DISINFECT AND DEODORIZE
- » KILL BED BUGS AND OTHER INSECTS

THE DOES-IT-ALL CLEANER DISINFECTANT!



MINT
ITEM #109159

LEMON
ITEM #118224

MEDICLEAN GERMICIDAL CLEANER CONCENTRATE

EPA Registration 70385-6*

ECONOMICAL DISINFECTANT FOR SEWER BACKUP OR WATER DAMAGE - EVEN EFFECTIVE ON **HUMAN CORONAVIRUS**

- One-step cleaner, disinfectant, deodorizer fungicide, mildewstat, virucide, deodorizer, bactericide and sanitizer
- Inhibits the growth of mold and mildew and their odors
- Cleans and **disinfects non-porous PPE**
- Kills H1N1, MRSA and more
- Use against SARS-CoV-2 (as a surrogate for COVID-19) under current EPA Emerging Pathogens Standard (Reg. No. 70385-6 on List N)

Not available in Puerto Rico or Canada.

NATURE-INSPIRED BROAD-SPECTRUM DISINFECTANT CLEANER AND DEODORIZER



ITEM #101812

BOTANICLEAN

EPA Registered 34810-25-70385, Ready-to-use*

CLEAN, DISINFECT AND DEODORIZE IN ONE EASY STEP

- Economical, one-step antimicrobial
- **No PPE, rinsing or wiping required***
- Mild pleasant fragrance without harsh fumes
- Kill claims include tuberculosis, MRSA, H1N1, HIV, gram positive and gram negative microorganisms and more
- Use against SARS-CoV-2 (as a surrogate for COVID-19) under current EPA Emerging Pathogens Standard (Reg. No. 34810-25 on List N)

Not available in Puerto Rico or Canada. Available in 5 gal. pails and 55 gal. drum.

COMBATS NUISANCE INSECTS AND BACTERIAL ODORS



ITEM #109162

MEDICLEAN X-590

EPA Registration #70385-3, Ready-to-Use*

WATER-BASED BACTERICIDE, INSECTICIDE, LIMITED DISINFECTANT AND DEODORANT IN ONE UNIQUE FORMULATION

- Registered for **use on soft surfaces**, including mattresses - perfect for combating bed bugs
- Kills gram negative bacteria
- Suitable for **decontamination of sewage backups, carcass removal and more**

Not available in California, Puerto Rico or Canada.

*See labels for specific claims and applications.

